

DATA SHEET

In-line SPD for Coaxial & RF Systems

RayDat CP N Series**C1 • C2 • C3**

IEC/EN Category: C1/C2/C3
 Surge Discharge Ratings: I_n : 10 kA, I_{max} : 20 kA
 Max. Operating Voltage: 70, 180, 280 V
 Maximum Peak Power: 40, 125, 300 W
 Frequency Range: DC–2.6 GHz
 Impedance: 50 Ω
 Insertion Loss: < 0.4 dB
 Return Loss: > 20 dB
 Termination: N Type (F-F, M-F)
 Housing: In-line Installation, Shielded Enclosure
 Compliance: IEC/EN 61643-21

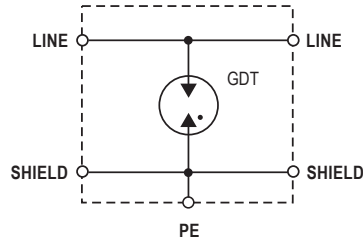
**Technical Data**

CP-N	70	180	280	
Electrical				
Maximum Continuous Operating Voltage	U_c	70 V	180 V	280 V
Maximum Peak Power	P_{max}	40 W	125 W	300 W
C2 Nominal Discharge Current (8/20 μ s)	I_n	10 kA		
Maximum Discharge Current (8/20 μ s)	I_{max}		20 kA	
Residual Voltage at (1 kV/ μ s)	U_{res}	< 600 V	< 700 V	< 900 V
Impedance	Z		50 Ω	
Insertion Loss	I_L		< 0.4 dB	
Return Loss	R_L		> 20 dB	
Insulation Resistance of Protection	R_{iso}		> 10 G Ω	
Frequency Range	f_G		0–2.6 GHz	
Mechanical				
Temperature Range		-40 °F to +176 °F [-40 °C to +80 °C]		
Connection	N Female/Female		N Male/Female	
Degree of Protection IEC/EN 60529	IP 20 (built-in)			
Housing Material	Metal			
Order Information				
Order Code	70	180	280	
CP N-FF-xxx	800 859	800 860	800 861	
CP N-MF-xxx	800 862	800 863	800 864	

RayDat CP N Series

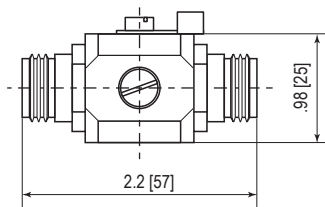
Internal Configuration

Legend
 GDT Gas Discharge Tube
 PE Ground

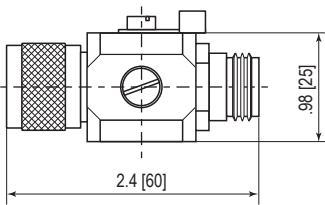


Dimensions & Packaging

CP N-FF



CP N-MF



CP N	CP N-FF-xxx			CP N-MF-xxx		
	70	180	280	70	180	280
Dimensions						
Weight per Unit	4.87 oz [138 g]			5.01 oz [142 g]		
Packaging Dimensions (Single Unit)	2.9 × 1.2 × 1.2" [73 × 30 × 30 mm]					
Minimum Package Quantity	100 pieces					

inches
[mm]

Information contained in this document is subject to change at any time without notice.

RoHS COMPLIANT  CE