

Flanged sockets

PCE flanged sockets are available in many different flanges in straight or sloping version.

Versions:

- 16A / 32A / 63A / 125A
- Contacts: brass or nickel-plated
- Screw terminal or screwless version
- Different flange sizes and fixing centers
- straight or sloping versions
- lockable (16A 3p, sloping version)
- different IP ratings
- different clock positions (position of the earthing contact)

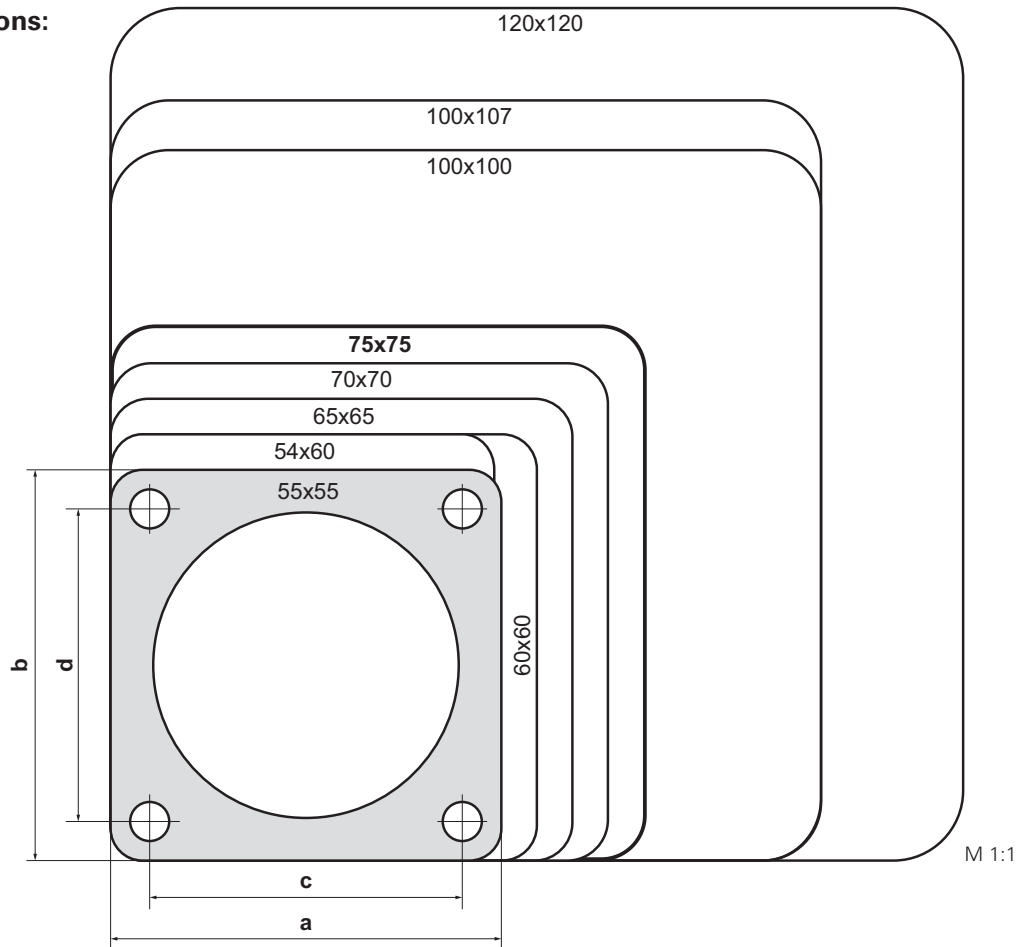
Advantages:

- solid, robust construction
- large opening angle of the lid
- screws/terminals are open when delivered
- advanced earthing contact
- contact frame with screws for 63/125A
- lamellar spring contacts for 63/125A



CEE Flanged sockets straight

Dimensions:

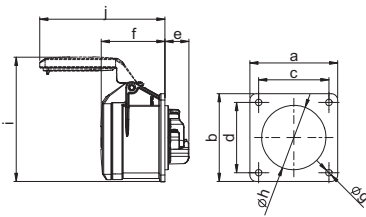


Versions:

flange		fixing center		page	16A			32A			63A			125A			
a	b	c	d		#	3p	4p	5p	3p	4p	5p	3p	4p	5p	3p	4p	5p
54	60	44	44	78-79	IP44*												
					IP67*												
55	55	44	44	78-79	IP44*												
					IP67*												
60	60	47	47	78-79	IP44*	IP44*											
					IP67*												
65	65	52	52	78-79	IP44*	IP44*											
					IP67*												
70	70	56	56	76-77	IP44*	IP44*	IP44*	IP44*	IP44*	IP44*							
					IP67*		IP67*					IP67*					
75	75	60	60	74-75	IP44*	IP44*	IP44*	IP44*	IP44*	IP44*							
					IP67*	IP67*	IP67*	IP67*	IP67*	IP67*							
100	100	80	80	80-81							IP44	IP44	IP44				
													IP67	IP67	IP67		
100	107	77	85	80-81							IP44	IP44	IP44				
													IP67	IP67	IP67		
120	120	100	100	80-81										IP67	IP67	IP67	

* also available in screwless connection technology (TT) **TURBO** TERMINALS

CEE Flanged sockets straight

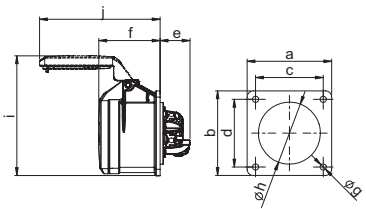


Flanged socket straight IP44/54

Poles	16 Amp			32 Amp		
	3	4	5	3	4	5
Flange a x b [mm]	75	75	75	75	75	75
Fixing center c x d [mm]	60	60	60	60	60	60
e [mm]	21	21	21	23	23	23
f [mm]	55	55	55	67	67	67
g [mm]	5,5	5,5	5,5	5,5	5,5	5,5
h [mm]	43	45	55	55	55	58
i [mm]	89	104	107	112	112	108
j [mm]	101	101	107	122	122	136
Wire flexible [mm ²]	1-2,5			2,5-6		
Wire solid [mm ²]	1-4			2,5-10		
Contact screws [Ncm]	100			110		
Weight [g]	120	132	150	167	182	210

- with screw terminals
- housing material: PA6
- contacts: brass
 - to order nickel-plated contacts please add a "v" e.g. 315-6f7v

IP44/54 splash- and dustproof

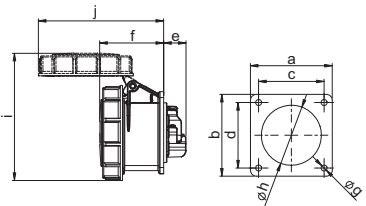


Flanged socket straight IP44/54 TT

Poles	16 Amp			32 Amp		
	3	4	5	3	4	5
Flange a x b [mm]	75	75	75	75	75	75
Fixing center c x d [mm]	60	60	60	60	60	60
e [mm]	27	27	27	27	27	27
f [mm]	55	55	55	67	67	67
g [mm]	5,5	5,5	5,5	5,5	5,5	5,5
h [mm]	43	45	55	55	55	58
i [mm]	89	104	107	112	112	108
j [mm]	101	101	107	122	122	136
Wire flexible [mm ²]	1-2,5			2,5-6		
Wire solid [mm ²]	1-4			2,5-10		
Weight [g]	123	132	155	167	182	211

- screwless connection technology
- housing material: PA6
- contacts: brass
 - to order nickel-plated contacts please add a "v" e.g. 315-6TTf7v

IP44/54 splash- and dustproof

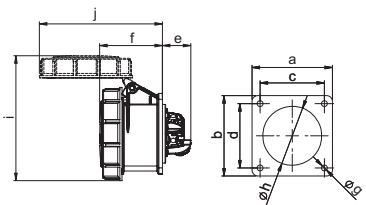


Flanged socket straight IP67

Poles	16 Amp			32 Amp		
	3	4	5	3	4	5
Flange a x b [mm]	75	75	75	75	75	75
Fixing center c x d [mm]	60	60	60	60	60	60
e [mm]	21	21	21	23	23	23
f [mm]	56	57	59	69	69	71
g [mm]	5,5	5,5	5,5	5,5	5,5	5,5
h [mm]	43	45	55	55	55	58
i [mm]	102	108	117	122	122	130
j [mm]	101	109	115	130	130	136
Wire flexible [mm ²]	1-2,5			2,5-6		
Wire solid [mm ²]	1-4			2,5-10		
Contact screws [Ncm]	100			110		
Weight [g]	135	153	183	206	222	260

- with screw terminals
- housing material: PA6
- contacts: brass
 - to order nickel-plated contacts please add a "v" e.g. 3152-6v

IP67 watertight

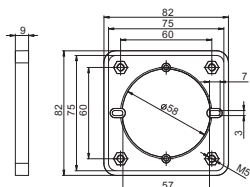


Flanged socket straight IP67 TT

Poles	16 Amp			32 Amp		
	3	4	5	3	4	5
Flange a x b [mm]	75	75	75	75	75	75
Fixing center c x d [mm]	60	60	60	60	60	60
e [mm]	27	27	27	27	27	27
f [mm]	56	57	59	69	69	71
g [mm]	5,5	5,5	5,5	5,5	5,5	5,5
h [mm]	43	45	55	55	55	58
i [mm]	102	108	117	122	122	130
j [mm]	101	109	115	130	130	136
Wire flexible [mm ²]	1-2,5			2,5-6		
Wire solid [mm ²]	1-4			2,5-10		
Weight [g]	137	153	188	206	222	261

- screwless connection technology
- housing material: PA6
- contacts: brass
 - to order nickel-plated contacts please add a "v" e.g. 3152-6TTv

IP67 watertight



Cable conduit installation

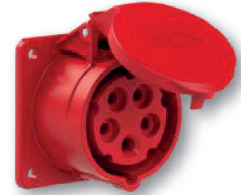
	Intermediate flange for cable conduit installation
for CEE flanged socket	
Flange	75x75 mm
Fixing center	60x60 mm
	Cat.No. 810-00

- suitable for CEE-flanged sockets with flange size 75x75 mm and fixing center 60x60 mm e.g. 315-6f7
- with intermediate flange, suitable for standard conduit mounting boxes

110V~	230V~	400V~	500V~	>50-500V~	>50V others
50/60Hz 4h	50/60Hz 3p=6h 4p+5p=9h	50/60Hz 3p=9h 4p+5p=6h	50/60Hz 7h	100-300Hz 10h	1h
Cat.No.	Cat.No.	Cat.No.	Cat.No.	Cat.No.	Cat.No.

flange 75 x 75 - fixing center 60 x 60

Amp.	Poles	pack. unit	110V~	230V~	400V~	500V~	>50-500V~	>50V others
16	3	10	313-4f7	313-6f7	313-9f7	313-7f7	313-10f7	313-1f7
16	4	10	314-4f7	314-9f7	314-6f7	314-7f7	314-10f7	314-1f7
16	5	10	315-4f7	315-9f7	315-6f7	315-7f7	315-10f7	315-1f7
32	3	10	323-4f7	323-6f7	323-9f7	323-7f7	323-10f7	323-1f7
32	4	10	324-4f7	324-9f7	324-6f7	324-7f7	324-10f7	324-1f7
32	5	10	325-4f7	325-9f7	325-6f7	325-7f7	325-10f7	325-1f7

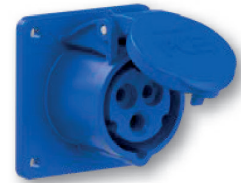


315-6f7

flange 75 x 75 - fixing center 60 x 60

Amp.	Poles	pack. unit	110V~	230V~	400V~
16	3	10	313-4TTf7	313-6TTf7	313-9TTf7
16	4	10	314-4TTf7	314-9TTf7	314-6TTf7
16	5	10	315-4TTf7	315-9TTf7	315-6TTf7
32	3	10	323-4TTf7	323-6TTf7	323-9TTf7
32	4	10	324-4TTf7	324-9TTf7	324-6TTf7
32	5	10	325-4TTf7	325-9TTf7	325-6TTf7

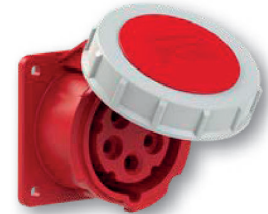
TURBOclick
TERMINAL



313-6TTf7

flange 75 x 75 - fixing center 60 x 60

Amp.	Poles	pack. unit	110V~	230V~	400V~	500V~	>50-500V~	>50V others
16	3	10	3132-4	3132-6	3132-9	3132-7	3132-10	3132-1
16	4	10	3142-4	3142-9	3142-6	3142-7	3142-10	3142-1
16	5	10	3152-4	3152-9	3152-6	3152-7	3152-10	3152-1
32	3	10	3232-4	3232-6	3232-9	3232-7	3232-10	3232-1
32	4	10	3242-4	3242-9	3242-6	3242-7	3242-10	3242-1
32	5	10	3252-4	3252-9	3252-6	3252-7	3252-10	3252-1



3152-6

flange 75 x 75 - fixing center 60 x 60

Amp.	Poles	pack. unit	110V~	230V~	400V~
16	3	10	3132-4TT	3132-6TT	3132-9TT
16	4	10	3142-4TT	3142-9TT	3142-6TT
16	5	10	3152-4TT	3152-9TT	3152-6TT
32	3	10	3232-4TT	3232-6TT	3232-9TT
32	4	10	3242-4TT	3242-9TT	3242-6TT
32	5	10	3252-4TT	3252-9TT	3252-6TT

TURBOclick
TERMINAL



3132-6TT



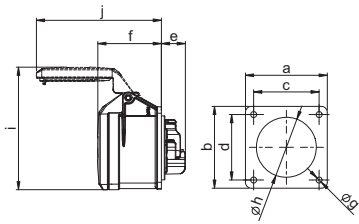
Conduit mounting box
(e.g. 37004701)

Intermediate flange
(810-00)

CEE socket outlet
(e.g. 315-6f7)



CEE Flanged sockets straight

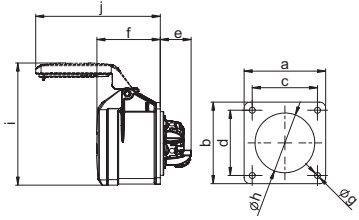


Flanged socket straight IP44/54

	16 Amp			32 Amp		
	3	4	5	3	4	5
Poles	3	4	5	3	4	5
Flange a x b [mm]	70	70	70	70	70	70
Fixing center c x d [mm]	56	56	56	56	56	56
e [mm]	21	21	21	23	23	23
f [mm]	55	55	55	67	67	67
g [mm]	5,5	5,5	5,5	5,5	5,5	5,5
h [mm]	43	45	55	55	55	58
i [mm]	87	101	105	112	112	108
j [mm]	101	101	107	122	122	136
Wire flexible [mm²]	1-2,5			2,5-6		
Wire solid [mm²]	1-4			2,5-10		
Contact screws [Ncm]	100			110		
Weight [g]	115	127	141	162	178	206

- with screw terminals
- housing material: PA6
- contacts: brass
- to order nickel-plated contacts please add a "v" e.g. 315-6v

IP44/54 splash- and dustproof

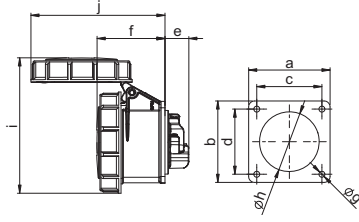


Flanged socket straight IP44/54 TT

	16 Amp			32 Amp		
	3	4	5	3	4	5
Poles	3	4	5	3	4	5
Flange a x b [mm]	70	70	70	70	70	70
Fixing center c x d [mm]	56	56	56	56	56	56
e [mm]	27	27	27	27	27	27
f [mm]	55	55	55	67	67	67
g [mm]	5,5	5,5	5,5	5,5	5,5	5,5
h [mm]	43	45	55	55	55	58
i [mm]	87	101	105	112	112	108
j [mm]	101	101	107	122	122	136
Wire flexible [mm²]	1-2,5			2,5-6		
Wire solid [mm²]	1-4			2,5-10		
Weight [g]	117	128	146	161	178	207

- screwless connection technology
- housing material: PA6
- contacts: brass
- to order nickel-plated contacts please add a "v" e.g. 315-6TTv

IP44/54 splash- and dustproof

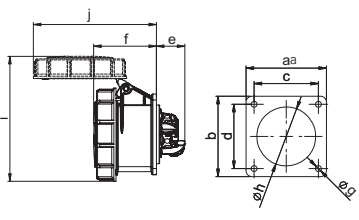


Flanged socket straight IP67

	16 Amp		32 Amp
	3	5	5
Poles	3	5	5
Flange a x b [mm]	70	70	70
Fixing center c x d [mm]	56	56	56
e [mm]	21	21	23
f [mm]	56	59	71
g [mm]	5,5	5,5	5,5
h [mm]	43	55	58
i [mm]	102	117	130
j [mm]	101	115	136
Wire flexible [mm²]	1-2,5		2,5-6
Wire solid [mm²]	1-4		2,5-10
Contact screws [Ncm]	100		110
Weight [g]	130	181	225

- with screw terminals
- housing material: PA6
- contacts: brass
- to order nickel-plated contacts please add a "v" e.g. 3152-6f70v

IP67 watertight



Flanged socket straight IP67 TT

	16 Amp		32 Amp
	3	5	5
Poles	3	5	5
Flange a x b [mm]	70	70	70
Fixing center c x d [mm]	56	56	56
e [mm]	27	27	27
f [mm]	56	59	71
g [mm]	5,5	5,5	5,5
h [mm]	43	55	58
i [mm]	102	117	130
j [mm]	101	115	136
Wire flexible [mm²]	1-2,5		2,5-6
Wire solid [mm²]	1-4		2,5-10
Weight [g]	132	186	227

- screwless connection technology
- housing material: PA6
- contacts: brass
- to order nickel-plated contacts please add a "v" e.g. 3152-6TTf70v

IP67 watertight

Amp.	Poles	pack. unit	110V~	230V~	400V~	500V~	>50-500V~	>50V others
			50/60Hz 4h	50/60Hz 3p=6h 4p+5p=9h	50/60Hz 3p=9h 4p+5p=6h	50/60Hz 7h	100-300Hz 10h	1h
			Cat.No.	Cat.No.	Cat.No.	Cat.No.	Cat.No.	Cat.No.

flange 70 x 70 - fixing center 56 x 56

16	3	10	313-4	313-6	313-9	313-7	313-10	313-1
16	4	10	314-4	314-9	314-6	314-7	314-10	314-1
16	5	10	315-4	315-9	315-6	315-7	315-10	315-1
32	3	10	323-4	323-6	323-9	323-7	323-10	323-1
32	4	10	324-4	324-9	324-6	324-7	324-10	324-1
32	5	10	325-4	325-9	325-6	325-7	325-10	325-1



315-6

flange 70 x 70 - fixing center 56 x 56

16	3	10	313-4TT	313-6TT	313-9TT			
16	4	10	314-4TT	314-9TT	314-6TT			
16	5	10	315-4TT	315-9TT	315-6TT			
32	3	10	323-4TT	323-6TT	323-9TT			
32	4	10	324-4TT	324-9TT	324-6TT			
32	5	10	325-4TT	325-9TT	325-6TT			

TURBO^{click}
TERMINAL



315-6TT

flange 70 x 70 - fixing center 56 x 56

16	3	10	3132-4f70	3132-6f70	3132-9f70	3132-7f70	3132-10f70	3132-1f70
16	5	10	3152-4f70	3152-9f70	3152-6f70	3152-7f70	3152-10f70	3152-1f70
32	5	10	3252-4f70	3252-9f70	3252-6f70	3252-7f70	3252-10f70	3252-1f70



3132-6f70

flange 70 x 70 - fixing center 56 x 56

16	3	10	3132-4TTf70	3132-6TTf70	3132-9TTf70			
16	5	10	3152-4TTf70	3152-9TTf70	3152-6TTf70			
32	5	10	3252-4TTf70	3252-9TTf70	3252-6TTf70			

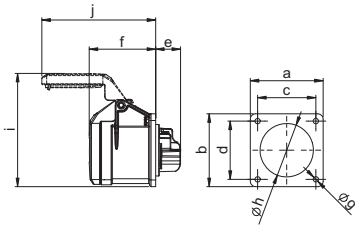
TURBO^{click}
TERMINAL



3132-6ttf70



CEE Flanged sockets straight

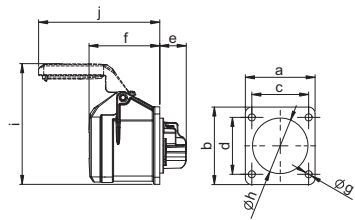


Flanged socket straight IP44/54

	16 Amp		16 Amp	
	3	4	3	4
Poles	3	4	3	4
Flange a x b [mm]	65	65	60	60
Fixing center c x d [mm]	52	52	47	47
e [mm]	21	21	21	21
f [mm]	55	55	55	55
g [mm]	5,5	5,5	5,5	5,5
h [mm]	43	45	43	45
i [mm]	84	99	82	99
j [mm]	101	100	101	101
Wire flexible [mm²]	1-2,5			
Wire solid [mm²]	1-4			
Contact screws [Ncm]	100			
Weight [g]	112	124	105	119

- with screw terminals
- housing material: PA6
- contacts: brass
 - to order nickel-plated contacts please add a "v" e.g. 314-6f0v

IP44/54 splash- and dustproof

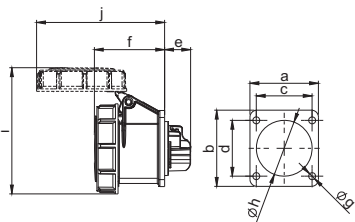


Flanged socket straight IP44/54

	16 Amp	
	3	3
Poles	3	3
Flange a [mm]	54	55
Flange b [mm]	60	55
Fixing center c x d [mm]	44	44
e [mm]	21	21
f [mm]	55	55
g [mm]	5,5	5,5
h [mm]	43	43
i [mm]	82	80
j [mm]	101	101
Wire flexible [mm²]	1-2,5	
Wire solid [mm²]	1-4	
Contact screws [Ncm]	100	
Weight [g]	105	103

- with screw terminals
- housing material: PA6
- contacts: brass
 - to order nickel-plated contacts please add a "v" e.g. 313-6f5v

IP44/54 splash- and dustproof



Flanged socket straight IP67

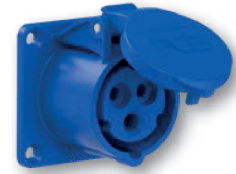
	16 Amp			
	3	3	3	3
Poles	3	3	3	3
Flange a [mm]	65	60	54	55
Flange b [mm]	65	60	60	55
Fixing center c x d [mm]	52	47	44	44
e [mm]	21	21	21	21
f [mm]	56	56	56	56
g [mm]	5,5	5,5	5,5	5,5
h [mm]	43	43	43	43
i [mm]	100	100	100	100
j [mm]	101	101	101	101
Wire flexible [mm²]	1-2,5			
Wire solid [mm²]	1-4			
Contact screws [Ncm]	100			
Weight [g]	127	123	124	120

- with screw terminals
- housing material: PA6
- contacts: brass
 - to order nickel-plated contacts please add a "v" e.g. 3132-6f0v

IP67 watertight

Amp.	Poles	pack. unit	110V~	230V~	400V~	500V~	>50- 500V~	>50V others
			50/60Hz	50/60Hz	50/60Hz	50/60Hz	100-300Hz	
			4h	3p=6h 4p+5p=9h	3p=9h 4p+5p=6h	7h	10h	1h
			Cat.No.	Cat.No.	Cat.No.	Cat.No.	Cat.No.	Cat.No.

flange 65 x 65 - fixing center 52 x 52								
16	3	10	313-4f0	313-6f0	313-9f0	313-7f0	313-10f0	313-1f0
16	4	10	314-4f0	314-9f0	314-6f0	314-7f0	314-10f0	314-1f0
flange 60 x 60 - fixing center 47 x 47								
16	3	10	313-4f6	313-6f6	313-9f6	313-7f6	313-10f6	313-1f6
16	4	10	314-4f6	314-9f6	314-6f6	314-7f6	314-10f6	314-1f6



313-6f0

flange 54 x 60 - fixing center 44 x 44								
16	3	10	313-4f9	313-6f9	313-9f9	313-7f9	313-10f9	313-1f9
flange 55 x 55 - fixing center 44 x 44								
16	3	10	313-4f5	313-6f5	313-9f5	313-7f5	313-10f5	313-1f5



313-6f9

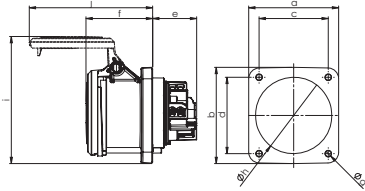
flange 65 x 65 - fixing center 52 x 52								
16	3	10	3132-4f0	3132-6f0	3132-9f0	3132-7f0	3132-10f0	3132-1f0
flange 60 x 60 - fixing center 47 x 47								
16	3	10	3132-4f6	3132-6f6	3132-9f6	3132-7f6	3132-10f6	3132-1f6
flange 54 x 60 - fixing center 44 x 44								
16	3	10	3132-4f9	3132-6f9	3132-9f9	3132-7f9	3132-10f9	3132-1f9
flange 55 x 55 - fixing center 44 x 44								
16	3	10	3132-4f5	3132-6f5	3132-9f5	3132-7f5	3132-10f5	3132-1f5



3132-6f9



CEE Flanged sockets straight

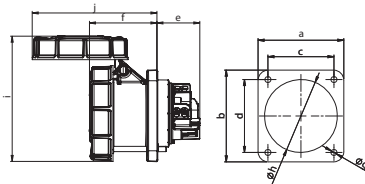


Flanged socket straight IP44 POWER TWIST

	63 Amp			63 Amp		
	3	4	5	3	4	5
Poles	3	4	5	3	4	5
Flange a [mm]	100	100	100	100	100	100
Flange b [mm]	100	100	100	107	107	107
Fixing center c [mm]	80	80	80	77	77	77
Fixing center d [mm]	80	80	80	85	85	85
e [mm]	50	50	50	50	50	50
f [mm]	75	75	75	75	75	75
g [mm]	7	7	7	7	7	7
h [mm]	85	85	85	85	85	85
i [mm]	138	138	138	142	142	142
j [mm]	138	138	138	138	138	138
Wire flexible [mm ²]				6-16		
Wire solid [mm ²]				6-25		
Contact screws [Ncm]				200		
Weight [g]	440	485	539	446	491	545

- contact frame with screws
- housing material: PA6
- contacts: brass with lamellar contact CuBe
 - **to order with pilot contact** please add a „5“, e.g. 3355-6 (see page 8)
 - to order with pilot contact system (PCS) please add a „6“ e.g. 3356-6 (see page 8)

IP44 splashproof

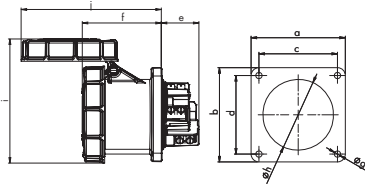


Flanged socket straight IP66/67 POWER TWIST

	63 Amp			63 Amp		
	3	4	5	3	4	5
Poles	3	4	5	3	4	5
Flange a [mm]	100	100	100	100	100	100
Flange b [mm]	100	100	100	107	107	107
Fixing center c [mm]	80	80	80	77	77	77
Fixing center d [mm]	80	80	80	85	85	85
e [mm]	50	50	50	50	50	50
f [mm]	80	80	80	80	80	80
g [mm]	7	7	7	7	7	7
h [mm]	85	85	85	85	85	85
i [mm]	147	147	147	147	147	147
j [mm]	146	146	146	146	146	146
Wire flexible [mm ²]				6-16		
Wire solid [mm ²]				6-25		
Contact screws [Ncm]				200		
Weight [g]	488	533	587	494	539	593

- contact frame with screws
- housing material: PA6
- contacts: brass with lamellar contact CuBe
 - **to order with pilot contact** please add a „5“, e.g. 3355-6 (see page 8)
 - to order with pilot contact system (PCS) please add a „6“ e.g. 3356-6 (see page 8)

IP66/67 watertight



Flanged socket straight IP66/67 POWER TWIST

	125 Amp		
	3	4	5
Poles	3	4	5
Flange a x b [mm]	120	120	120
Fixing center c x d [mm]	100	100	100
e [mm]	48	48	48
f [mm]	101	101	101
g [mm]	8	8	8
h [mm]	90	90	90
i [mm]	159	159	159
j [mm]	179	179	179
Wire flexible [mm ²]	16-50		
Wire solid [mm ²]	16-70		
Contact screws [Ncm]	450		
Weight [g]	752	890	986

- contact frame with hexagon socket screws
- housing material: PA6
- contacts: brass with lamellar contact CuBe
 - **to order with pilot contact** please add a „5“, e.g. 3455-6 (see page 8)
 - to order with pilot contact system (PCS) please add a „6“ e.g. 3456-6 (see page 8)

IP66/67 watertight

Amp.	Poles	pack. unit	110V~	230V~	400V~	500V~	>50-500V~	>50V others
			50/60Hz 4h	50/60Hz 3p=6h 4p+5p=9h	50/60Hz 3p=9h 4p+5p=6h	50/60Hz 7h	100-300Hz 10h	1h
			Cat.No.	Cat.No.	Cat.No.	Cat.No.	Cat.No.	Cat.No.

flange 100 x 100 - fixing center 80 x 80								
63	3	2	3331-4	3331-6	3331-9	3331-7	3331-10	3331-1
63	4	2	3341-4	3341-9	3341-6	3341-7	3341-10	3341-1
63	5	2	3351-4	3351-9	3351-6	3351-7	3351-10	3351-1
flange 100 x 107 - fixing center 77 x 85								
63	3	2	3331-4fc	3331-6fc	3331-9fc	3331-7fc	3331-10fc	3331-1fc
63	4	2	3341-4fc	3341-9fc	3341-6fc	3341-7fc	3341-10fc	3341-1fc
63	5	2	3351-4fc	3351-9fc	3351-6fc	3351-7fc	3351-10fc	3351-1fc



3351-6

flange 100 x 100 - fixing center 80 x 80								
63	3	2	333-4	333-6	333-9	333-7	333-10	333-1
63	4	2	334-4	334-9	334-6	334-7	334-10	334-1
63	5	2	335-4	335-9	335-6	335-7	335-10	335-1
flange 100 x 107 - fixing center 77 x 85								
63	3	2	333-4fc	333-6fc	333-9fc	333-7fc	333-10fc	333-1fc
63	4	2	334-4fc	334-9fc	334-6fc	334-7fc	334-10fc	334-1fc
63	5	2	335-4fc	335-9fc	335-6fc	335-7fc	335-10fc	335-1fc



335-6

flange 120 x 120 - fixing center 100 x 100								
125	3	2	343-4	343-6	343-9	343-7	343-10	343-1
125	4	2	344-4	344-9	344-6	344-7	344-10	344-1
125	5	2	345-4	345-9	345-6	345-7	345-10	345-1



345-6

