

PLUGS AND SOCKETS 7-POLES

7-pole (6P+E) industrial plugs and sockets cover a wide range of application.

- 7-pole (6P+E)
- 16A or 32A
- IP rating IP44/54 or IP66/67
- Contacts: nickel-plated
- Screw terminals
- External central cable gland

Application for industry, agriculture and commerce:

- Star delta connections (motor)
- Tapped winding connections (pole changing)
- Actuation
- Monitoring
- Controlling
- Indicating
- Electrical interlocks, and many more ...

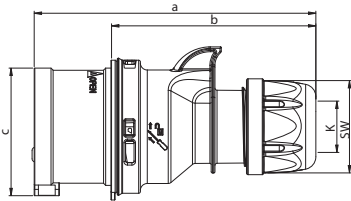
Products: plugs and sockets 7-pole:

- Plugs and angled plugs
- Flanged and wall mounted plugs
- Connectors and angled connectors
- Flanged and wall mounted sockets

The possibility of producing inductive resp. pre-mating contacts by shortend pins, enlarges the range of application.



Plugs and sockets 7-poles

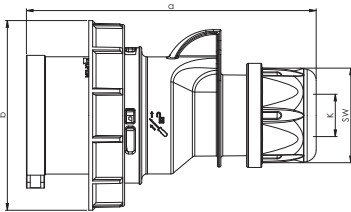


Plug IP44/54 SHARK

	16 Amp	32 Amp
Poles	7	7
a [mm]	134	155
b [mm]	98	109
c [mm]	61	70
K_cable Ø [mm]	8-16	11,5-22
Wire flexible [mm ²]	1-2,5	2,5-6
Contact screws [Ncm]	100	110
SW [mm]	42	50
Weight [g]	185	283

- with screw terminals
- housing material: PA6
- contacts: nickel-plated

IP44/54 dust- and splashproof

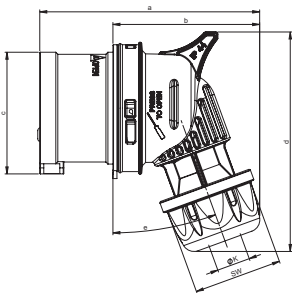


Plug IP66/67 SHARK

	16 Amp	32 Amp
Poles	7	7
a [mm]	134	155
b [mm]	87	100
K_cable Ø [mm]	8-16	11,5-22
Wire flexible [mm ²]	1-2,5	2,5-6
Contact screws [Ncm]	100	110
SW [mm]	42	50
Weight [g]	217	329

- with screw terminals
- housing material: PA6
- contacts: nickel-plated

IP66/67 watertight

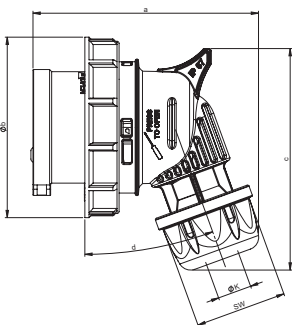


Angled plug IP44/54 TWIST

	16 Amp	32 Amp
Poles	7	7
a [mm]	107	137
b [mm]	71	92
c [mm]	61	70
d [mm]	102	121
e [°]	20	25
K_cable Ø [mm]	8-16	11,5-22
Wire flexible [mm ²]	1-2,5	2,5-6
Contact screws [Ncm]	100	110
SW [mm]	42	50
Weight [g]	189	286

- with screw terminals
- housing material: PC/ABS
- contacts: nickel-plated

IP44/54 dust- and splashproof



Angled plug IP66/67 TWIST

	16 Amp	32 Amp
Poles	7	7
a [mm]	109	136
b [mm]	87	100
c [mm]	107	118
d [°]	20	25
K_cable Ø [mm]	8-16	11,5-22
Wire flexible [mm ²]	1-2,5	2,5-6
Contact screws [Ncm]	100	110
SW [mm]	42	50
Weight [g]	220	331

- with screw terminals
- housing material: PC/ABS
- contacts: nickel-plated

IP66/67 watertight

Amp.	Poles	pack. unit	110V~	230V~	400V~	500V~
			50/60Hz	50/60Hz	50/60Hz	50/60Hz
			4h	9h	6h	7h
			Cat.No.	Cat.No.	Cat.No.	Cat.No.

16	7	10	017-4v	017-9v	017-6v	017-7v
32	7	10	027-4v	027-9v	027-6v	027-7v



027-6v

16	7	10	0172-4v	0172-9v	0172-6v	0172-7v
32	7	10	0272-4v	0272-9v	0272-6v	0272-7v



0272-6v

16	7	10	8017-4v	8017-9v	8017-6v	8017-7v
32	7	10	8027-4v	8027-9v	8027-6v	8027-7v



8027-6v

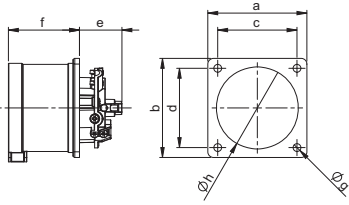
16	7	10	80172-4v	80172-9v	80172-6v	80172-7v
32	7	10	80272-4v	80272-9v	80272-6v	80272-7v



80272-6v



Plugs and sockets 7-poles



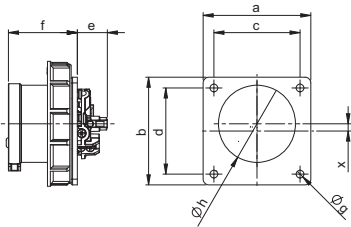
Flanged plug straight IP44/54

Poles	16 Amp		32 Amp	
	7	7	7	7
a [mm]	70	75	70	75
b [mm]	70	75	70	75
c [mm]	56	60	56	60
d [mm]	56	60	56	60
e [mm]	28	28	30	30
f [mm]	42	42	51	51
Ø g [mm]	5,5	5,5	5,5	5,5
Ø h [mm]	55	55	55	55
Wire flexible [mm ²]	1-2,5		2,5-6	
Wire solid [mm ²]	1-4		2,5-10	
Contact screws [Ncm]	100		110	
Weight [g]	147	152	216	221

- with screw terminals
- housing material: PA6
- contacts: nickel-plated

• According to EN 60309:
For correct use a locking device has to be provided (see page 10)

IP44/54 dust- and splashproof



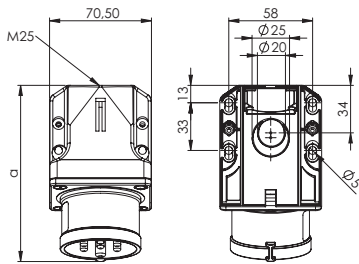
Flanged plug straight IP66/67

Poles	16 Amp		32 Amp	
	7	7	7	7
a [mm]	75	75	75	75
b [mm]	75	75	75	75
c [mm]	60	60	60	60
d [mm]	60	60	60	60
e [mm]	28	30	30	30
f [mm]	48	58	58	58
Ø g [mm]	5,5	5,5	5,5	5,5
Ø h [mm]	55	55	55	55
x [mm]	5,05	0	0	0
Wire flexible [mm ²]	1-2,5		2,5-6	
Wire solid [mm ²]	1-4		2,5-10	
Contact screws [Ncm]	100		110	
Weight [g]	180		265	

- with screw terminals
- housing material: PA6
- contacts: nickel-plated

• According to EN 60309:
For correct use a locking device has to be provided (see page 10)
• for 16A 7p the plug is placed off centered for keeping the standards

IP66/67 watertight



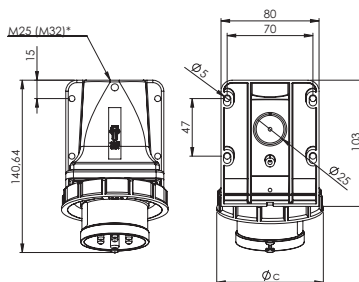
Wall mounted plug IP44/54

Poles	16 Amp		32 Amp	
	7	7	7	7
a [mm]	122	132	132	132
Height [mm]	79	85	85	85
M [mm]	25	25	25	25
Wire flexible [mm ²]	1-2,5		2,5-6	
Wire solid [mm ²]	1-4		2,5-10	
Contact screws [Ncm]	100		110	
Weight [g]	235		304	

- with screw terminals
- housing material: PA6
- contacts: nickel-plated
- top and rear entry
- incl. threaded cable grommet
- 9517*, 9527* large housing for wiring through

IP44/54 splashproof

angle = 15°



Wall mounted plug IP66/67

Poles	16 Amp		32 Amp	
	7	7	7	7
a [mm]	140	152	152	152
Height [mm]	100	102	102	102
c [mm]	87	100	100	100
M* [mm]	25	25	25	25
Wire flexible [mm ²]	1-2,5		2,5-6	
Wire solid [mm ²]	1-4		2,5-10	
Contact screws [Ncm]	100		110	
Weight [g]	271		356	

- with screw terminals
- housing material: PA6
- contacts: nickel-plated
- top and rear entry
- incl. threaded bung

IP66/67 watertight

angle = 15°

*M32 optional on request

Amp.	Poles	pack. unit	110V~	230V~	400V~	500V~
			50/60Hz	50/60Hz	50/60Hz	50/60Hz
			4h	9h	6h	7h
			Cat.No.	Cat.No.	Cat.No.	Cat.No.

Flange 70 x 70 - Fixing center: 56 x 56						
16	7	10	617-4v	617-9v	617-6v	617-7v
32	7	10	627-4v	627-9v	627-6v	627-7v
Flange 75 x 75 - Fixing center: 60 x 60						
16	7	10	617-4f7v	617-9f7v	617-6f7v	617-7f7v
32	7	10	627-4f7v	627-9f7v	627-6f7v	627-7f7v



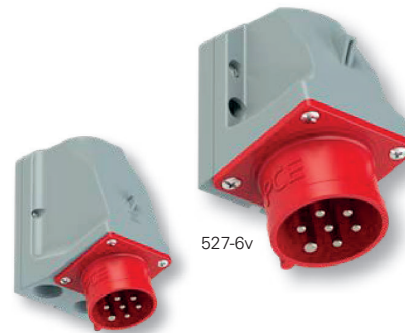
627-6v

Flange 75 x 75 - Fixing center: 60 x 60						
16	7	10	6172-4v	6172-9v	6172-6v	6172-7v
32	7	10	6272-4v	6272-9v	6272-6v	6272-7v



6272-6v

16	7	10	517-4v	517-9v	517-6v	517-7v
32	7	10	527-4v	527-9v	527-6v	527-7v
for wiring through (M25 top, 2xM25 bottom)						
16	7	5	9517-4v	9517-9v	9517-6v	9517-7v
32	7	5	9527-4v	9527-9v	9527-6v	9527-7v



9527-6v

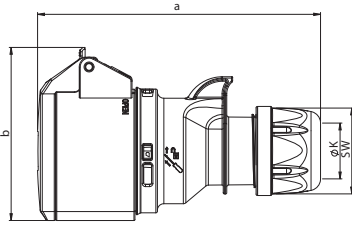
16	7	5	5172-4kv	5172-9kv	5172-6kv	5172-7kv
32	7	5	5272-4kv	5272-9kv	5272-6kv	5272-7kv



5272-6kv



Plugs and sockets 7-poles

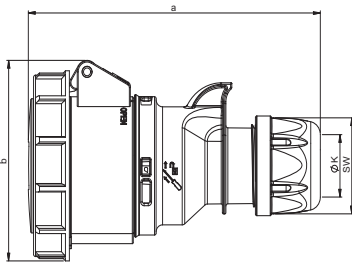


Connector IP44/54 SHARK

	16 Amp	32 Amp
Poles	7	7
a [mm]	145	168
b [mm]	89	99
K_cable Ø [mm]	8-16	11,5-22
Wire flexible [mm ²]	1-2,5	2,5-6
Contact screws [Ncm]	100	110
SW [mm]	42	50
Weight [g]	210	310

- with screw terminals
- housing material: PA6
- contacts: nickel-plated

IP44/54 dust- and splashproof

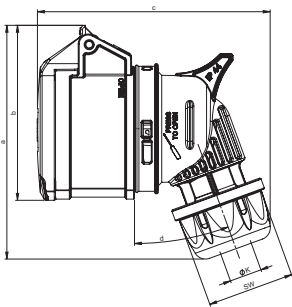


Connector IP66/67 SHARK

	16 Amp	32 Amp
Poles	7	7
a [mm]	147	171
b [mm]	92	102
K_cable Ø [mm]	8-16	11,5-22
Wire flexible [mm ²]	1-2,5	2,5-6
Contact screws [Ncm]	100	110
SW [mm]	42	50
Weight [g]	254	377

- with screw terminals
- housing material: PA6
- contacts: nickel-plated

IP66/67 watertight

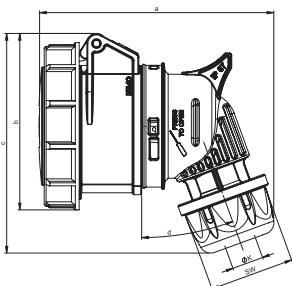


Angled connector IP44/54 TWIST

	16 Amp	32 Amp
Poles	7	7
a [mm]	118	130
b [mm]	89	98
c [mm]	119	148
d [°]	20	25
e [mm]		
K_cable Ø [mm]	8-16	11,5-22
Wire flexible [mm ²]	1-2,5	2,5-6
Contact screws [Ncm]	100	110
SW [mm]	42	50
Weight [g]	214	313

- with screw terminals
- housing material: PC/ABS
- contacts: nickel-plated

IP44/54 dust- and splashproof



Angled connector IP66/67 TWIST

	16 Amp	32 Amp
Poles	7	7
a [mm]	122	152
b [mm]	92	102
c [mm]	115	126
d [°]	20	25
K_cable Ø [mm]	8-16	11,5-22
Wire flexible [mm ²]	1-2,5	2,5-6
Contact screws [Ncm]	100	110
SW [mm]	42	50
Weight [g]	258	379

- with screw terminals
- housing material: PC/ABS
- contacts: nickel-plated

IP66/67 watertight

Amp.	Poles	pack. unit	110V~	230V~	400V~	500V~
			50/60Hz	50/60Hz	50/60Hz	50/60Hz
			4h	9h	6h	7h
			Cat.No.	Cat.No.	Cat.No.	Cat.No.

16	7	10	217-4v	217-9v	217-6v	217-7v
32	7	10	227-4v	227-9v	227-6v	227-7v



227-6v

16	7	10	2172-4v	2172-9v	2172-6v	2172-7v
32	7	10	2272-4v	2272-9v	2272-6v	2272-7v



2272-6v

16	7	10	8217-4v	8217-9v	8217-6v	8217-7v
32	7	10	8227-4v	8227-9v	8227-6v	8227-7v



8227-6v

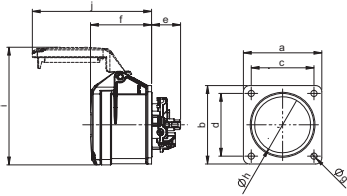
16	7	10	82172-4v	82172-9v	82172-6v	82172-7v
32	7	10	82272-4v	82272-9v	82272-6v	82272-7v



82272-6v



Plugs and sockets 7-poles

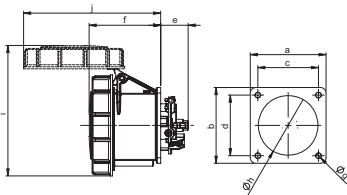


Flanged socket straight IP44/54

Poles	16 Amp		32 Amp	
	7	7	7	7
a [mm]	70	75	70	75
b [mm]	70	75	70	75
c [mm]	56	60	56	60
d [mm]	56	60	56	60
e [mm]	26	26	28	23
f [mm]	55	55	67	67
Ø g [mm]	5,5	5,5	5,5	5,5
Ø h [mm]	52	52	58	58
Wire flexible [mm ²]	1-2,5		2,5-6	
Wire solid [mm ²]	1-4		2,5-10	
Contact screws [Ncm]	100		110	
Weight [g]	174	179	243	253

- with screw terminals
- housing material: PA6
- contacts: nickel-plated

IP44/54 dust- and splashproof

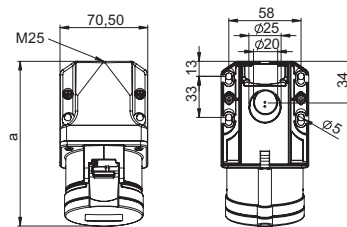


Flanged socket straight IP66/67

Poles	16 Amp		32 Amp	
	7	7	7	7
a [mm]	70	75	70	75
b [mm]	70	75	70	75
c [mm]	56	60	56	60
d [mm]	56	60	56	60
e [mm]	26	26	28	28
f [mm]	59	59	71	71
Ø g [mm]	5,5	5,5	5,5	5,5
Ø h [mm]	55	55	60	60
i [mm]	117	117	130	130
j [mm]	115	115	136	136
Wire flexible [mm ²]	1-2,5		2,5-6	
Wire solid [mm ²]	1-4		2,5-10	
Contact screws [Ncm]	100		110	
Weight [g]	207	211	292	299

- with screw terminals
- housing material: PA6
- contacts: nickel-plated

IP66/67 watertight



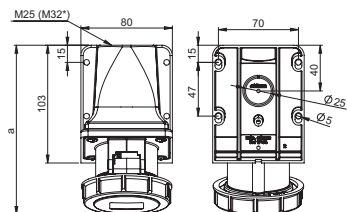
Wall mounted socket IP44/54

Poles	16 Amp		32 Amp	
	7	7	7	7
a [mm]	133		145	
Height [mm]	100		107	
M [mm]	25		25	
Wire flexible [mm ²]	1-2,5		2,5-6	
Wire solid [mm ²]	1-4		2,5-10	
Contact screws [Ncm]	100		110	
Weight [g]	261		330	

- with screw terminals
- housing material: PA6
- contacts: nickel-plated
- top and rear entry
- incl. threaded cable grommet
- 917*, 927* large housing for wiring through

IP44/54 dust- and splashproof

angle=15°



Wall mounted socket IP66/67

Poles	16 Amp		32 Amp	
	7	7	7	7
a [mm]	148		163	
Height [mm]	102		112	
M [mm]	25		25	
Wire flexible [mm ²]	1-2,5		2,5-6	
Wire solid [mm ²]	1-4		2,5-10	
Contact screws [Ncm]	100		110	
Weight [g]	302		390	

- with screw terminals
- housing material: PA6
- contacts: nickel-plated
- top and rear entry
- incl. threaded bung

IP66/67 watertight

angle=15°

*M32 optional on request

Amp.	Poles	pack. unit	110V~	230V~	400V~	500V~
			50/60Hz	50/60Hz	50/60Hz	50/60Hz
			4h	9h	6h	7h
			Cat.No.	Cat.No.	Cat.No.	Cat.No.

with flange 70 x 70 - fixing center 56 x 56						
16	7	10	317-4v	317-9v	317-6v	317-7v
32	7	10	327-4v	327-9v	327-6v	327-7v
with flange 75 x 75 - fixing center 60 x 60						
16	7	10	317-4f7v	317-9f7v	317-6f7v	317-7f7v
32	7	10	327-4f7v	327-9f7v	327-6f7v	327-7f7v



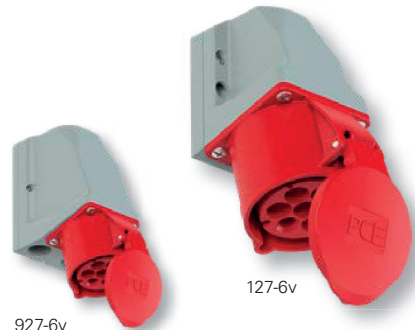
327-6v

with flange 70 x 70 - fixing center 56 x 56						
16	7	10	3172-4f70v	3172-9f70v	3172-6f70v	3172-7f70v
32	7	10	3272-4f70v	3272-9f70v	3272-6f70v	3272-7f70v
with flange 75 x 75 - fixing center 60 x 60						
16	7	10	3172-4v	3172-9v	3172-6v	3172-7v
32	7	10	3272-4v	3272-9v	3272-6v	3272-7v



3272-6v

16	7	10	117-4v	117-9v	117-6v	117-7v
32	7	10	127-4v	127-9v	127-6v	127-7v
for wiring through (M25 top, 2xM25 bottom)						
16	7	5	917-4v	917-9v	917-6v	917-7v
32	7	5	927-4v	927-9v	927-6v	927-7v



927-6v

16	7	5	1172-4v	1172-9v	1172-6v	1172-7v
32	7	5	1272-4v	1272-9v	1272-6v	1272-7v



1272-6v

