











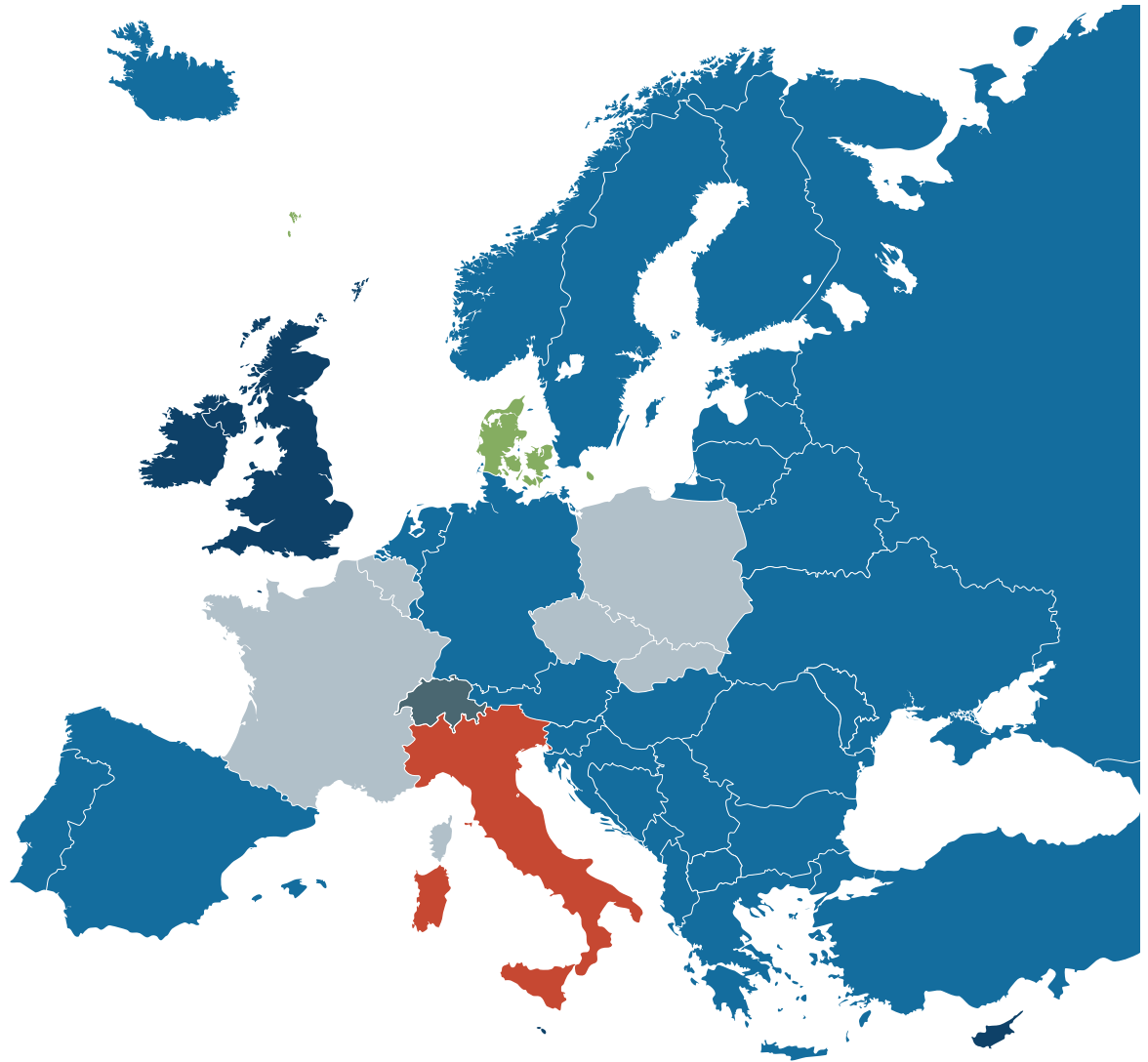
SAFETY PLUGS AND SOCKETS AND ACCESSORIES


		Page
	Plugs and socket outlets S-NOVA / P-NOVA plus	162
	Data socket CAT.6A (RJ45) USB charging socket	178
	Plugs and sockets IP66/68 Nautilus - watertight	180
	TAURUS² Plug and connector systems	186
	TOPTAURUS² Plug and connector systems	192
	3-way connectors	196





Systems in EUROPE

The safety sockets from PCE impress with their extremely robust design made of high quality polyamide. Over 500 variations guarantee a perfect product for all applications.





Type F 
Austrian/German system

Type E 
French/Belgian system

Type G 
British system

Type L 
Italian system

Type J 
Swiss system

Type K 
Danish system



Source: www.iec.ch

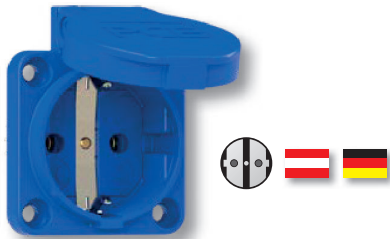


Full flexibility:

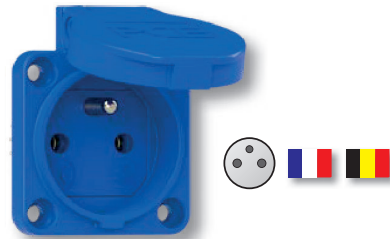
01	System Austrian/German or French/Belgian
02	Flange size 50x50 / 70x70 / 75x75 mm
03	Connection type rear / side / screwless
04	Rotation shutter SAFETY ⁺
05	Sealing bulge special sealing contour for IP54
06	Colors 7 different colors

01 System - 2 versions

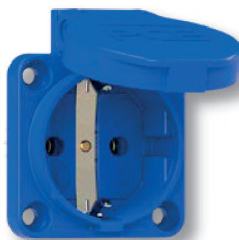
Austrian/German system
Type F - with earth lug



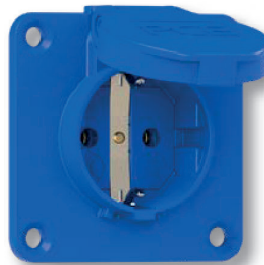
French/Belgian system
Type E - with earth pin



02 Flange size - 3 versions



50x50mm
Flange: □ 50x50mm
Fixing center: □ 38x38mm



70x70mm
Flange: □ 70x70mm
Fixing center: □ 56x56mm



75x75mm
Flange: □ 75x75mm
Fixing center: □ 60x60mm

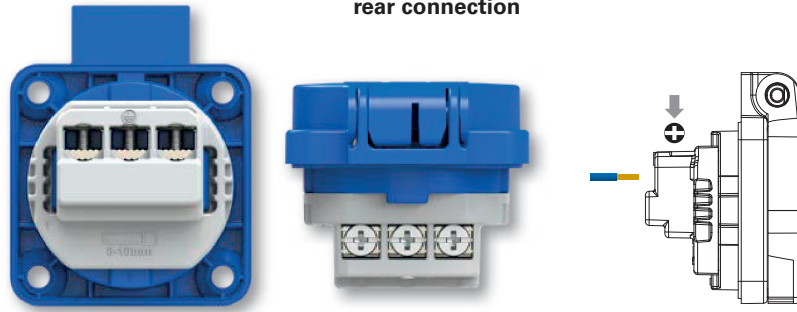


03 Connection type- 3 versions

Screw terminals

rear or side connection

- Multi-slot screws (Type H, size 2)
- contacts open
- nickel-plated contacts
- captive screws
- **ready for wiring through**



side connection from above



Screwless terminal

rear connection

- spring-clamp technology
- tool-free assembly (pre-tensioned release mechanism- no tool needed for initial connection)
- **ready for wiring through**
- suitable for all wire types (striped)- also connectable without end sleeve*



TURBO click
TERMINAL



Insert wire



Press for closing terminal

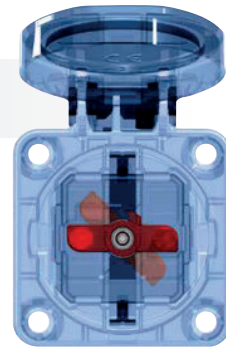


Ready!

04 Shutter

SAFETY+

Rotation shutter (optional)
for increased security



05 Sealing bulge

Sealing bulge (optional)

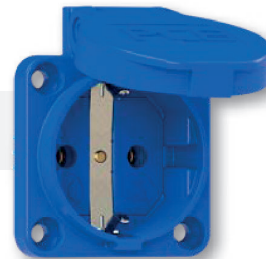
Plugs and socket outlets for portable use are subject to the standard DIN VDE 0620-1:2010 and ÖVE/ÖNORM E 8684-2-2:2010

Examples for portable use:
mobile distribution boxes and cable reels



06 Colors - 9 versions

b blue (sim. RAL5017)
STANDARD



e
yellow
(sim. RAL 1023)



o
orange
(sim. RAL2011)



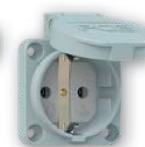
r
red
(sim. RAL3000)



u
green
(sim. RAL6018)



s
black
(sim. RAL9005)



dg
darkgray
(sim. RAL 7046)

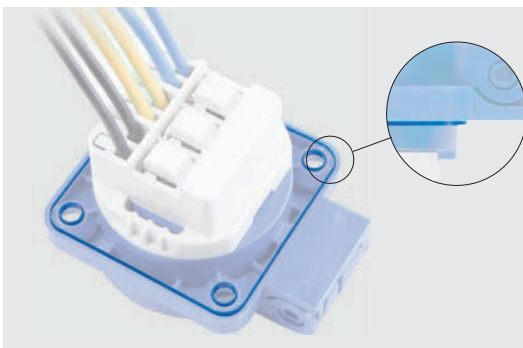


g
gray
(sim. RAL 7035)



w
white
(sim. RAL9016)

available on request (minimum quantity 200 pcs.)

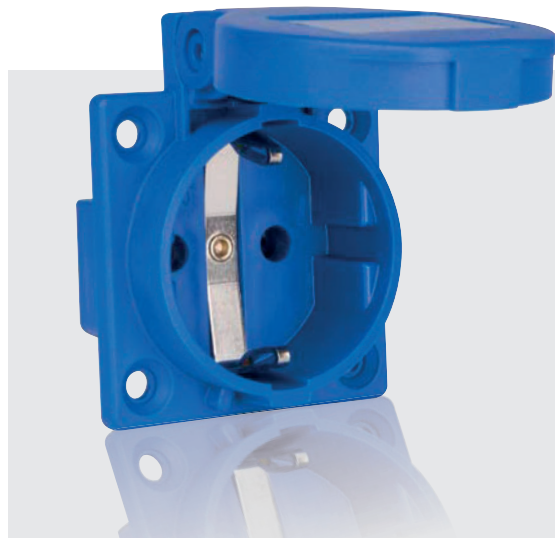


Sealing contour (for perfect sealing)

- special sealing contour on the backside
- no need for additional rubber sealing on plain surfaces
- protection class **IP54**

Additional flange gasket (rubber) optional available;
e.g.: for uneven surfaces





Product features:

minimized contact carrier

for mounting in narrow surroundings (cable reels)

high stability

by single-part housing also in case of shutter!

robust construction

based on highgrade polyamide 6

flange size 50x50 mm

(thinner flange, no separate gasket necessary)

fixing center 38x38 mm

(fourpoint-mounting with countersunk screw)

Rotation shutter

Optional with shutter



SAFETY+

- optimum screw contacts
- open contact screws
- hinged lid with wide opening angle
high closing pressure
- IP54 splashproof
- optional: **approved shutter**
for all types
- Austrian/German versions according
to DIN VDE 0620-1st of February 2010

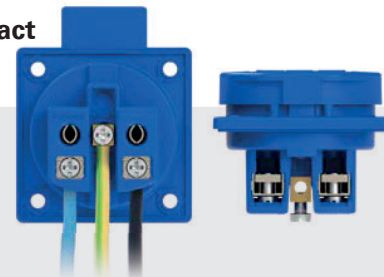
French/Belgian standard

Earth pin with single part terminal - also available in version with shutter

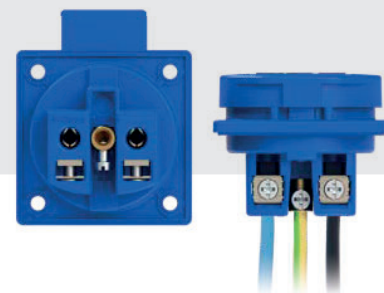


Screw contact systems

side connection

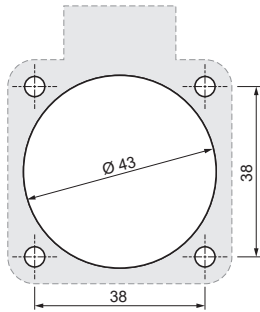


rear connection

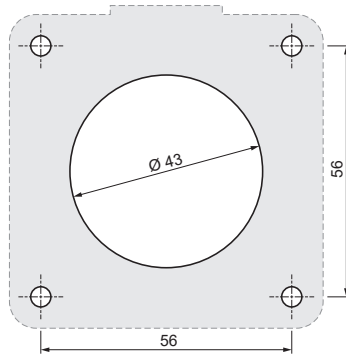


Socket outlets

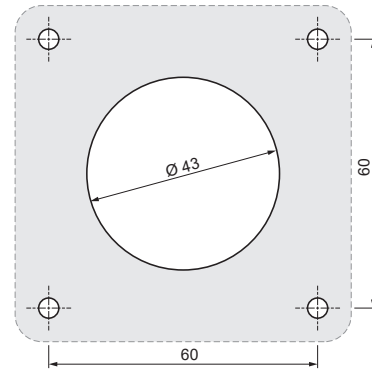
Dimensions S-NOVA:



Flange: 50x50 mm

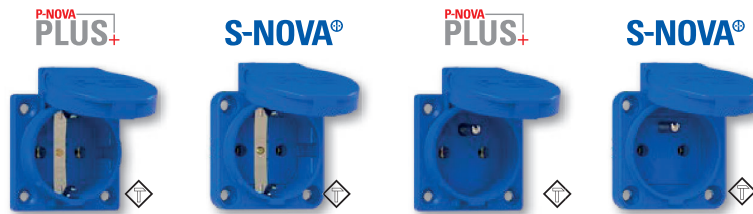




Flange: 70x70 mm



Flange: 75x75 mm

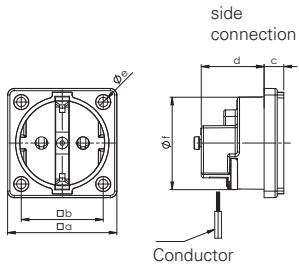
Versions: Flange 50x50



Connection type	Austrian/German system 		French/Belgian system 	
Screw terminal rear connection				
	1050-0b	105-0b	1040-0b	104-0b
incl. shutter	1050-0bc	105-0bc	1040-0bc	104-0bc
incl. sealing bulge*	1050-0bw	105-0bw		
Screw terminal side connection				
	1050-0bs	105-0bs	1040-0bs	104-0bs
incl. shutter	1050-0bsc	105-0bsc	1040-0bsc	104-0bsc
incl. sealing bulge*	1050-0bsw	105-0bsw		
Screwless terminal rear connection				
		109-0b		108-0b
incl. shutter		109-0bc		108-0bc
incl. sealing bulge*		109-0bw		

*Plugs and socket outlets (DIN 49440) for portable use are subject to the standard DIN VDE 0620-1:2010 and ÖVE/ÖNORM E 8684-2-2:2010





Socket outlet Austrian/German system

• STANDARD •

	16 Amp
Poles	2P + E
Flange a [mm]	50
Fixing center b [mm]	37,5
c [mm]	9
d [mm]	29
e [mm]	4,3
f [mm]	43
Wire flexible [mm ²]	1 - 2x2,5
Wire solid [mm ²]	1 - 2x2,5
Contact screws [Ncm]	80
Weight [g]	34

- with screw terminals
- housing material: PA6
- contacts: nickel-plated contacts

IP20



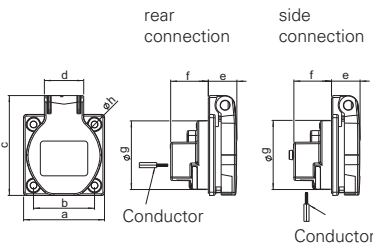
Socket outlet Austrian/German system

• STANDARD •

	16 Amp
Poles	2P + E
Flange a [mm]	50
Fixing center b [mm]	38
c [mm]	62
d [mm]	25
e [mm]	18
f [mm]	24
g [mm]	43
h [mm]	4,2
Wire flexible [mm ²]	1 - 2x2,5
Wire solid [mm ²]	1 - 2x2,5
Contact screws [Ncm]	80
Weight [g]	45

- with screw terminals
- housing material: PA6
- contacts: nickel-plated contacts

IP54 splashproof



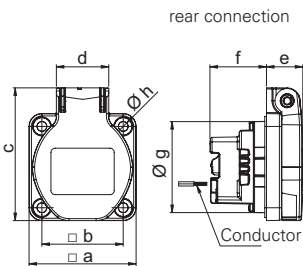
Socket outlet Austrian/German system

• STANDARD •

	16 Amp
Poles	2P + E
Flange a [mm]	50
Fixing center b [mm]	38
c [mm]	62
d [mm]	25
e [mm]	17
f [mm]	26
g [mm]	43
h [mm]	4,5
Wire flexible [mm ²]	1 - 2x2,5
Wire solid [mm ²]	1 - 2x2,5
Weight [g]	46

- screwless connection technology
- housing material: PA6
- contacts: nickel-plated contacts
- rear connection

IP54 splashproof



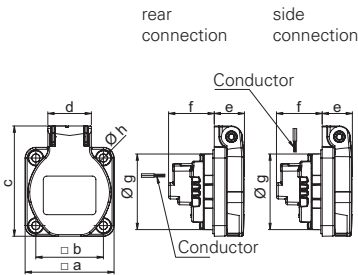
Socket outlet Austrian/German system

• STANDARD • • SPECIAL •

	16 Amp	16 Amp	
	2P + E	2P + E	2P + E
Poles	2P + E	2P + E	2P + E
Flange a [mm]	50	70	75
Fixing center b [mm]	38	56	60
c [mm]	62	72	75
d [mm]	25	25	25
e [mm]	17	17	21
f [mm]	26	26	22
g [mm]	43	43	43
h [mm]	4,5	5,5	5,5
Wire flexible [mm ²]		1 - 2x2,5	
Wire solid [mm ²]		1 - 2x2,5	
Contact screws [Ncm]		80	
Weight [g]	46	51	55

- with screw terminals
- housing material: PA6
- contacts: nickel-plated contacts

IP54 splashproof





STANDARD

SPECIAL

SPECIAL

250V~

250V~

250V~

50/60Hz
Flange
50x5050/60Hz
Flange
70x7050/60Hz
Flange
75x75**PCE**

Amp.

Poles

pack.
unit

Abbreviations/Types

Cat.No.

Cat.No.

Cat.No.

16	3	100
----	---	-----

P-NOVA
PLUS+

„sc“ side connection, with shutter

10584-0wsc



10584-0wsc

16	3	100
16	3	100
16	3	100
16	3	100

P-NOVA
PLUS+**rear connection (standard)**

„s“ side connection

„c“ rear connection, with shutter

„sc“ side connection, with shutter

SAFETY+

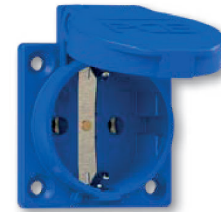
SAFETY+

1050-0b

1050-0bs

1050-0bc

1050-0bsc



1050-0b

16	3	100
16	3	100

S-NOVA®**rear connection (standard)**

„c“ rear connection, with shutter

SAFETY+

109-0b

109-0bc

TURBO click
TERMINAL

109-0b

16	3	100
16	3	100
16	3	100
16	3	100

S-NOVA®**rear connection (standard)**

„s“ side connection

„c“ rear connection, with shutter

„sc“ side connection, with shutter

SAFETY+

SAFETY+

105-0b

105-0bs

105-0bc

105-0bsc

105-7b

105-7bs

105-7bc

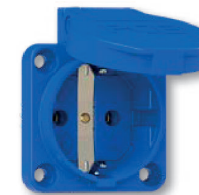
105-7bcs

105-8b

105-8bs

105-8bc

105-8bcs

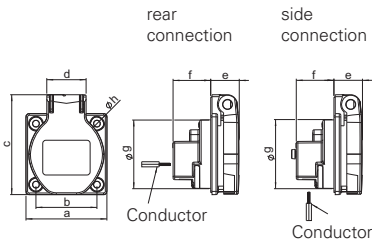
105-0b
Flange = 50x50105-8b
Flange = 75x75

Special versions are available on request.



Plugs and socket outlets

Flanged sockets conforming to Austrian/German system for portable use



Socket outlet Austrian/German system

• STANDARD •

	16 Amp
Poles	2P + E
Flange a [mm]	50
Fixing center b [mm]	38
c [mm]	62
d [mm]	25
e [mm]	22
f [mm]	24
g [mm]	43
h [mm]	4,2
Wire flexible [mm ²]	1 - 2x2,5
Wire solid [mm ²]	1 - 2x2,5
Contact screws [Ncm]	80
Weight [g]	45

- with sealing bulge
- with screw terminals
- housing material: PA6
- contacts: nickel-plated contacts

IP54 splashproof



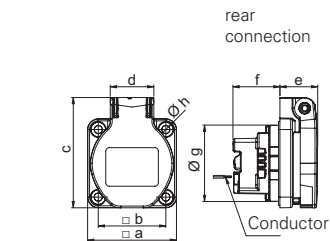
Socket outlet Austrian/German system

• STANDARD •

	16 Amp
Poles	2P + E
Flange a [mm]	50
Fixing center b [mm]	38
c [mm]	62
d [mm]	25
e [mm]	21
f [mm]	26
g [mm]	43
h [mm]	4,5
Wire flexible [mm ²]	1 - 2x2,5
Wire solid [mm ²]	1 - 2x2,5
Weight [g]	44

- with sealing bulge
- screwless connection technology
- housing material: PA6
- contacts: nickel-plated contacts
- rear connection

IP54 splashproof



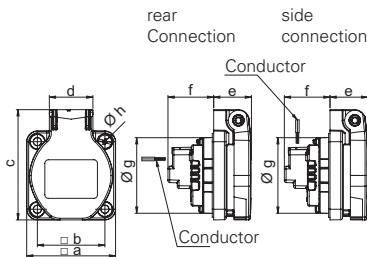
Socket outlet Austrian/German system

• STANDARD • • SPECIAL •

	16 Amp	16 Amp	
Poles	2P + E	2P + E	2P + E
Flange a [mm]	50	70	75
Fixing center b [mm]	38	56	60
c [mm]	62	72	75
d [mm]	25	25	25
e [mm]	21	21	21
f [mm]	26	26	26
g [mm]	43	43	43
h [mm]	4,5	5,5	5,5
Wire flexible [mm ²]		1 - 2x2,5	
Wire solid [mm ²]		1 - 2x2,5	
Contact screws [Ncm]		80	
Weight [g]	46	51	52

- with sealing bulge
- with screw terminals
- housing material: PA6
- contacts: nickel-plated contacts

IP54 splashproof



Plugs and socket outlets for portable use are subject to the standard DIN VDE 0620-1:2010 and ÖVE/ÖNORM E 8684-2-2:2010 (Plugs and sockets for household and similar applications).
Examples for portable use: mobile distribution boxes and cable reels.

Remark: Version for Germany and Austria



STANDARD SPECIAL SPECIAL

250V~

250V~

250V~

50/60Hz
Flange
50x50

50/60Hz
Flange
70x70

50/60Hz
Flange
75x75

PCE

Amp. Poles pack. unit

Abbreviations/Types

Cat.No.

Cat.No.

Cat.No.

16	3	100
16	3	100

P-NOVA
PLUS+

rear connection, with sealing bulge
side connection, with sealing bulge

1050-0bw
1050-0bsw



1050-0bw

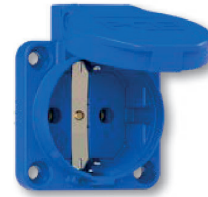
16	3	100
----	---	-----

S-NOVA®

rear connection, with sealing bulge

109-0bw

TURBO click
TERMINALS



109-0bw

16	3	100
16	3	100

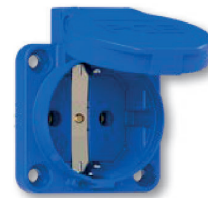
S-NOVA®

rear connection, with sealing bulge
side connection, with sealing bulge

105-0bw
105-0bsw

105-7bw

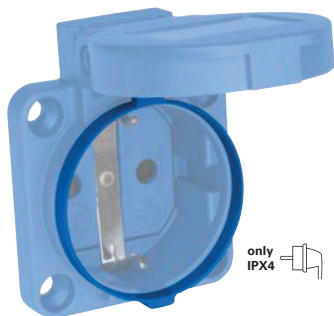
105-8bw



105-0bw

Explanation:

The prescribed standard of the sealing bulge is highlighted in dark blue in the picture below.

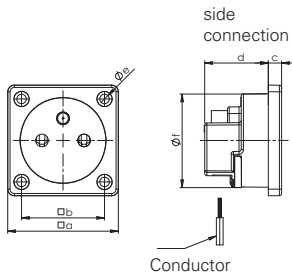


only IPX4



Plugs and socket outlets

Flanged sockets conforming to French/Belgian system

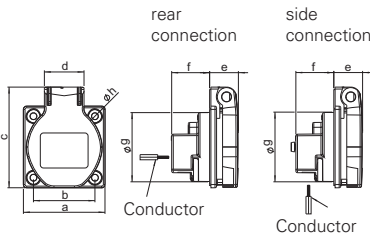


Socket outlet French/Belgian system

	• STANDARD •
	16 Amp
Poles	2P + E
Flange a [mm]	50
Fixing center b [mm]	37,5
c [mm]	6
d [mm]	29
e [mm]	4,3
f [mm]	43
Wire flexible [mm ²]	1 - 2x2,5
Wire solid [mm ²]	1 - 2x2,5
Contact screws [Ncm]	80
Weight [g]	34

- with screw terminals
- housing material: PA6
- contacts: nickel-plated contacts

IP20

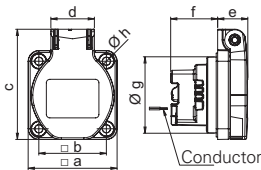


Socket outlet French/Belgian system

	• STANDARD •
	16 Amp
Poles	2P + E
Flange a [mm]	50
Fixing center b [mm]	38
c [mm]	62
d [mm]	25
e [mm]	18
f [mm]	24
g [mm]	43
h [mm]	4,2
Wire flexible [mm ²]	1 - 2x2,5
Wire solid [mm ²]	1 - 2x2,5
Contact screws [Ncm]	80
Weight [g]	45

- with screw terminals
- housing material: PA6
- contacts: nickel-plated contacts

IP54 splashproof

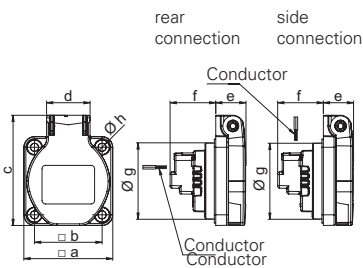


Socket outlet French/Belgian version

	• STANDARD •
	16 Amp
Poles	2P + E
Flange a [mm]	50
Fixing center b [mm]	38
c [mm]	62
d [mm]	25
e [mm]	17
f [mm]	26
g [mm]	43
h [mm]	4,5
Wire flexible [mm ²]	1 - 2x2,5
Wire solid [mm ²]	1 - 2x2,5
Weight [g]	43

- screwless connection technology
- housing material: PA6
- contacts: nickel-plated contacts
- rear connection

IP54 splashproof



Socket outlet French/Belgian version

	• STANDARD •	• SPECIAL •	
	16 Amp	16 Amp	
Poles	2P + E	2P + E	2P + E
Flange a [mm]	50	70	75
Fixing center b [mm]	38	56	60
c [mm]	62	72	75
d [mm]	25	25	25
e [mm]	17	17	17
f [mm]	26	26	26
g [mm]	43	43	43
h [mm]	4,5	5,5	5,5
Wire flexible [mm ²]	1 - 2x2,5		
Wire solid [mm ²]	1 - 2x2,5		
Contact screws [Ncm]	80		
Weight [g]	45	50	51

- with screw terminals
- housing material: PA6
- contacts: nickel-plated contacts

IP54 splashproof



STANDARD SPECIAL SPECIAL

250V~

250V~

250V~

50/60Hz
Flange
50x50

50/60Hz
Flange
70x70

50/60Hz
Flange
75x75

PCE

Amp.
Poles
pack.
unit

Abbreviations/Types

Cat.No.

Cat.No.

Cat.No.

16 3 100

**P-NOVA
PLUS+**
„s“ side connection
color: white

10484-0ws



10484-0ws

16 3 100
16 3 100
16 3 100
16 3 100

**P-NOVA
PLUS+**
rear connection (standard)
„s“ side connection
„c“ with shutter
„sc“ side connection, with shutter



1040-0b
1040-0bs
1040-0bc
1040-0bsc



1040-0b

16 3 100
16 3 100

S-NOVA®
rear connection (standard)
„c“ with shutter



108-0b
108-0bc

**TURBOclick
TERMINAL**



108-0b

108-0b

16 3 100
16 3 100
16 3 100
16 3 100

S-NOVA®
rear connection (standard)
„s“ side connection
„c“ with shutter
„sc“ side connection, with shutter



104-0b
104-0bs
104-0bc
104-0bsc

104-7b
104-7bs
104-7bc
104-7bsc

104-8b
104-8bs
104-8bc
104-8bsc



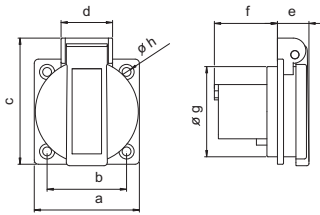
104-0b
Flange = 50x50



Special versions are available on request.

Plugs and socket outlets

Flanged sockets conforming to Danish, English and Swiss system

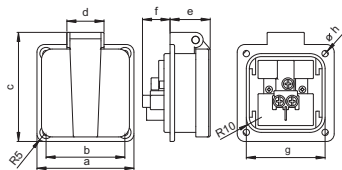


Socket outlet Danish system

	16 Amp
Poles	2P + E
a [mm]	50
b [mm]	38
c [mm]	60
d [mm]	24,5
e [mm]	15
f [mm]	30
g [mm]	43
h [mm]	4,2
Weight [g]	42

- with screw terminals
- housing material: PA6
- contacts: nickel-plated contacts

IP54 splashproof

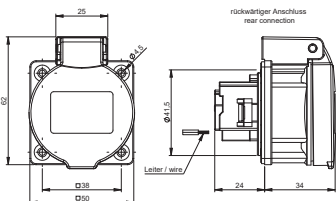


Socket outlet English version

	13 Amp	13 Amp
Poles	2P + E	2P + E
a [mm]	64	50
b [mm]	52	38
c [mm]	72	64
d [mm]	25	25
e [mm]	26,5	18
f [mm]	18	22
g [mm]	52	35
h [mm]	4,2	4,5
Weight [g]	67	50

- with screw terminals
- housing material: PA6

IP54 splashproof

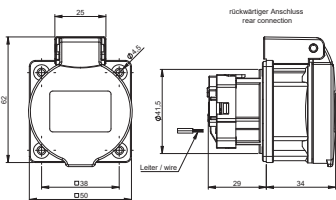


Socket outlet IP55 Swiss version T13 and T23

	10 Amp	16 Amp
Poles	2P + E	2P + E
Weight [g]	58	58

- with screw terminals
- housing material: PA6
- contacts: nickel-plated contacts

IP55 dust- and splashproof



Socket outlet IP55 Swiss version T15 and T25

	16 Amp
Poles	3L + N + PE
Weight [g]	67

- with screw terminals
- housing material: PA6
- contacts: nickel-plated contacts

IP55 dust- and splashproof



250V~

440V~

50/60Hz

50/60Hz

PCE

Amp.	Poles	pack. unit	Abbreviations/Types	Cat.No.	Cat.No.
------	-------	------------	---------------------	---------	---------

16	3	100	rear connection Flange: 50 x 50 blue	1030-0b	
----	---	-----	---	---------	--

16	3	100	rear connection Flange: 50 x 50 black	1030-0s	
----	---	-----	--	---------	--



1030-0b

13	3	100	side connection Flange: 64 x 64 black	1020-0s	
----	---	-----	--	---------	--

13	3	100	side connection Flange: 50 x 50 black	1020-5s	
----	---	-----	--	---------	--



1020-5s

10	3	100	T13 rear connection Flange: 50 x 50 black (lid blue), with Shutter	1313-0bc	
----	---	-----	---	----------	--

16	3	100	T23 rear connection Flange: 50 x 50 black (lid blue), with Shutter	1323-0bc	
----	---	-----	---	----------	--



1313-0bc



1323-0bc

16	3	100	T25 rear connection Flange: 50 x 50 black (lid red)	1325-0r	
----	---	-----	--	---------	--

1325-0r

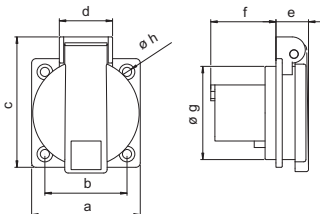


1325-0r



Plugs and socket outlets

Flanged sockets and accessories

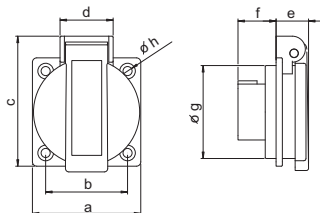


Socket outlet Italian system

	16 Amp
Poles	2P + E
a [mm]	50
b [mm]	38
c [mm]	61,5
d [mm]	25,5
e [mm]	14,5
f [mm]	29
g [mm]	43,6
h [mm]	4,2
Weight [g]	45

- with screw terminals
- housing material: PA6
- contacts: nickel-plated contacts

IP54 splashproof

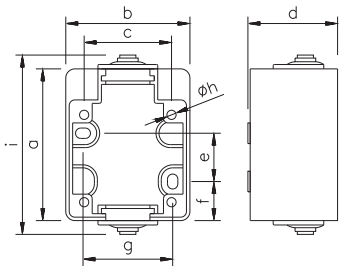


Socket outlet Australian system

	15 Amp
Poles	2P + E
a [mm]	50
b [mm]	38
c [mm]	62
d [mm]	24,5
e [mm]	17
f [mm]	15
g [mm]	42
h [mm]	4,2
Weight [g]	45

- with screw terminals
- housing material: PA6
- contacts: brass
- with gasket

IP20



Mounting box

S-NOVA® P-NOVA PLUS+

Advantages:

- easy mounting - long holes for screws
- hole distance dimensions- on the rear
- space between wall and box by nipples
- 2 entries (top and bottom)
- holes for dehydration available

- for sockets S-NOVA and P-NOVA Plus with hinged lid and flange size 50x50 mm
- suitable also for Swiss socket T23 1023-0bs and for Danish socket 1030-0b
- inkl. flange gasket (d105-05)

IP44 splashproof

Flange gasket for P-NOVA plus and S-NOVA

- material: rubber

Flange gasket can be mounted additionally if required. (e.g.: for uneven surfaces)

P-NOVA plus: s=1mm


- flange 50x50mm


S-NOVA: s=1,5mm

- flange 50x50 / 70x70 / 75x75mm

Protective cover for P-NOVA plus and S-NOVA

- protective cover
- material: PP

Amp.	Poles	pack. unit	Abbreviations/Types	Cat.No.		
16	3	100	rear connection Flange: 50 x 50	1036-0s	black	

15	3	100	rear connection Flange: 50 x 50	1037-0s	black	
----	---	-----	---------------------------------	---------	-------	---

- 24 Mounting box for S-NOVA and P-NOVA+
- 24 Mounting box for S-NOVA and P-NOVA+

Fields of application: designed for use in workshop halls, garages, industrial plants, outside walls,...

Mounting box is supplied complete.

106-0
106-0g

blue
grey



Flange gasket for P-NOVA Plus 50x50



d105-05

Flange gasket for S-NOVA 50x50



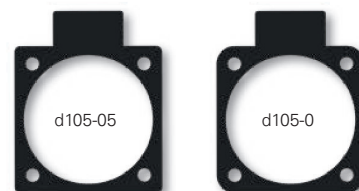
d105-0

Flange gasket for S-NOVA 70x70

d10570

Flange gasket for S-NOVA 75x75

d10575



100 transparent

ts105



- 
- 
- 
- 
- 
- 
- 
- 
- 
- 
- 
- 
- 

Plugs and socket outlets

Data socket, USB socket and accessories



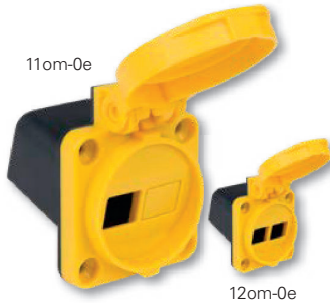
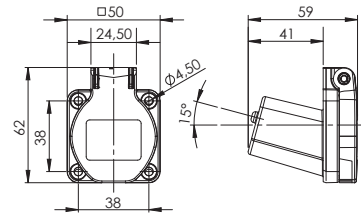
Data socket with CAT 6_A RJ45 module

- Data socket with hinged lid (2x opening)
- housing material: PA6 yellow
- incl. rubber seal with cable entry
- **incl. 2xCAT 6_A RJ45 module** (093617)

IP54 splashproof
(lid closed)

12k452-0e

pack.unit: 1



Data socket empty

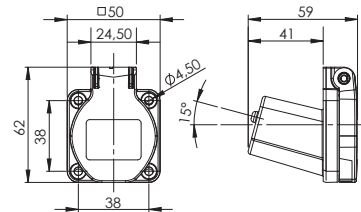
- Data socket with hinged lid
- housing material: PA6 yellow
- incl. rubber seal with cable entry
- **empty (without module)**

1x opening
2x opening

110m-0e

120m-0e

pack.unit: 1



Keystone module CAT 6_A



- CAT 6_A Keystone module, shielded, RJ45 to LSA stripes
- tool free cable installation,
- color coded acc. to EIA/TIA 568 A&B

093617

pack.unit: 1

Keystone module CAT 6_A RJ45/RJ45



- CAT 6_A Keystone module, shielded, RJ45 to RJ45

15270159

pack.unit: 1

Data module USB/USB



- USB 2.0 A / USB 2.0 A

086317

pack.unit: 1

Surface outlet with data socket

- Surface socket (see page 102)
- Data socket 2x Cat 6A RJ45 Modul
- M25 cable gland (double 7mm)
- IP54 (lid closed without inserted cable)

white

86312k452

pack.unit: 6



Mounting-set for flanged sockets 50x50 (38x38)

suitable for S-NOVA flanged socket and data socket

Set consists of

- plastic nut 4-times (isolated) 38x38
- countersunk screws (4 pcs.)

Mounting-set for panel thickness 1–4mm

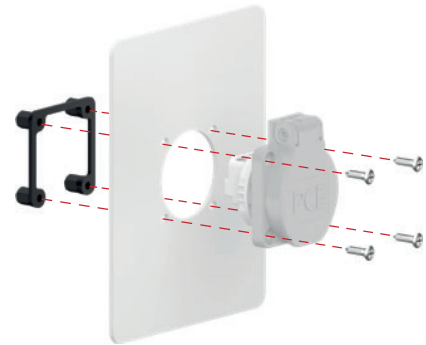
12k452-1/4

Mounting-set for panel thickness 4–8mm

12k452-4/8

Mounting-set for panel thickness 8–13mm

12k452-8/13



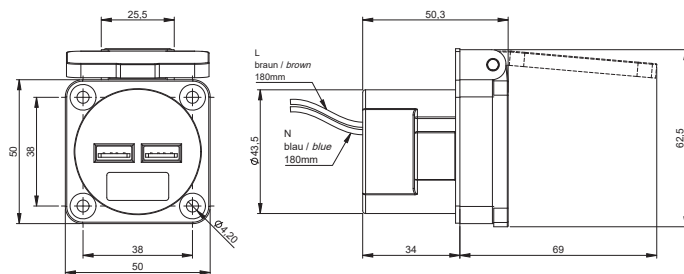
USB charging socket 5V/2,1A (2x) with integrated power supply unit

for charging and powering mobile devices with USB connector



- plastic housing, color: similar to RAL1023
- 2 pcs. USB type A sockets for simultaneous charging of 2 USB devices
- integrated electronic short circuit and overload protection
- input: 240V AC, 50/60Hz, 0,15A (ext. back-up fuse 6A characteristic B necessary)
- power supply: 2x connecting wires AWG 22-18, length: approx. 180mm
- output voltage: 2x 5V DC
- No-load consumption: 0.3W max.
- rated current: per connector 2.1A- with integrated load management 2.1A max.
- overvoltage category: II, protection class: II
- dimensions HxVxD: 62,5x50x50,3 mm, flange hole spacing: 38x38 mm
- incl. flange gasket (rubber)

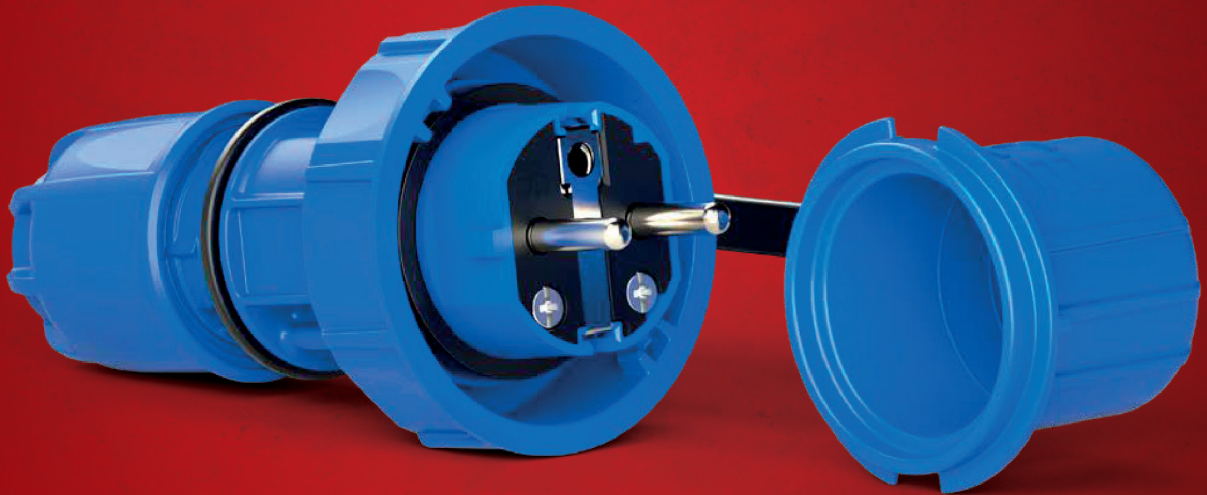
Protection class: IP54 / IP20 (closed / open lid)



U25050

pack.unit: 20






NAUTILUS[®]

WATERTIGHT PLUGS, SOCKETS AND CONNECTORS

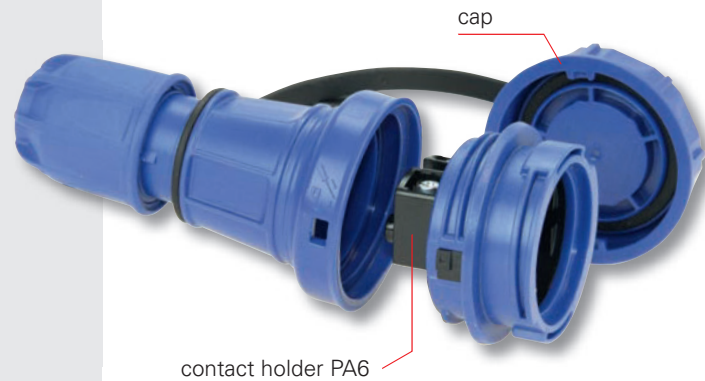
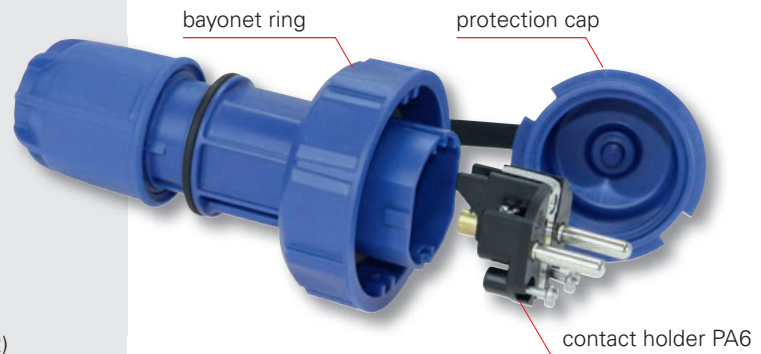
IP66/68

Plug / Connector

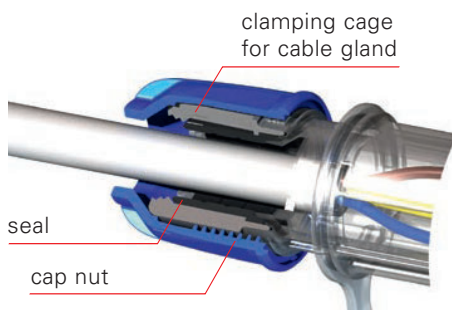
- IP66/68 waterproof up to 2 bar / 2 h
- for severe conditions 
- with/without shutter
- robust design
- housing material PC/ABS
- protection cover with bayonet
- contact supporting part of PA6, glow wire test 850°C
- open contact screw head +/- (Typ H, Size 2)
- nickel-plated screw terminals
- cover and cap with elastic band
- axels and mounting screws in stainless V2A quality
- two earthing system (plug)
- very large hinged lid opening angle (~160°)
- 2 color versions:
 - blue (sim. RAL5005)
 - bronze-green (sim. RAL6031)
- optional: weapon norm approval VG96926

  Austrian/German system

  French/Belgian system

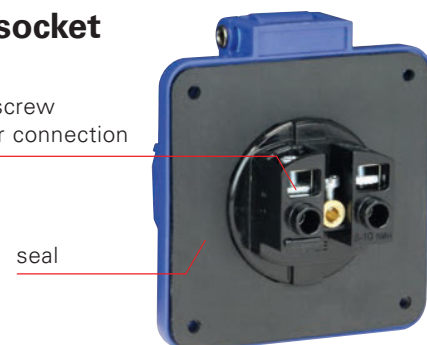


Screwless cable gland

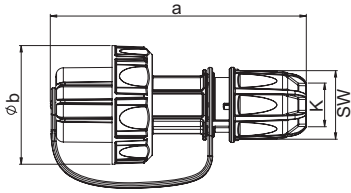


Flanged socket

nickel-plated screw terminals, rear connection



- 
- 
- 
- 
- 
- 
- 
- 
- 
- 
- 
- 
- 

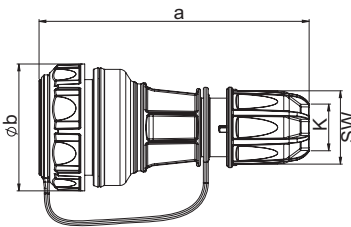


Plug with protection cap IP66/68

	16 Amp
Poles	2P + E
a [mm]	144
b Ø [mm]	65
K (cable Ø) [mm]	6- 19
SW [mm]	38
Wire flexible [mm ²]	1- 2,5
Contact screws [Ncm]	80
Weight [g]	120

- with screw terminals
- housing material: PC/ABS
- contacts: nickel-plated
- protection cap with band
- VG96926 (Weapon norm approval) on request!

IP66/68 watertight
up to 2 bar / 2h

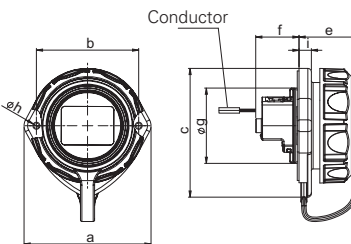


Connector with cap IP66/68

	16 Amp
Poles	2P + E
a [mm]	140
b Ø [mm]	65
K (cable Ø) [mm]	6- 19
SW [mm]	38
Wire flexible [mm ²]	1- 2,5
Contact screws [Ncm]	80
Weight [g]	140

- with screw terminals
- housing material: PC/ABS
- contacts: nickel-plated
- cap with band
- VG96926 (Weapon norm approval) on request!

IP66/68 watertight
up to 2 bar / 2h

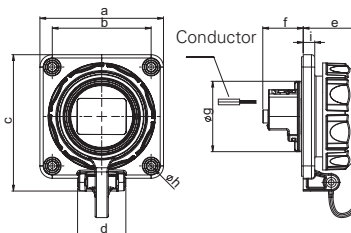


Flanged socket oval with cover band IP66/68

	16 Amp
Poles	2P + E
a [mm]	72
b [mm]	58
c [mm]	75
e [mm]	36
f [mm]	25
g [mm]	43
h [mm]	4
i [mm]	7
Wire flexible [mm ²]	1- 2x2,5
Wire solid [mm ²]	1- 2x2,5
Contact screws [Ncm]	80
Weight [g]	87

- with screw terminals
- housing material: PC/ABS
- contacts: nickel-plated contacts
- rear connection
- 2-point fastening
- VG96926 (Weapon norm approval) on request!

IP66/68 watertight
up to 2 bar / 2h



Flanged socket 75x75 mm with cover band IP66/68

	16 Amp
Poles	2P + E
a [mm]	75
b [mm]	60
c [mm]	84
d [mm]	30
e [mm]	36
f [mm]	25
g [mm]	43
h [mm]	5,5
i [mm]	7
Wire flexible [mm ²]	1- 2x2,5
Wire solid [mm ²]	1- 2x2,5
Contact screws [Ncm]	80
Weight [g]	101

- with screw terminals
- housing material: PC/ABS
- contacts: nickel-plated contacts
- rear connection
- 4-point fastening
- VG96926 (Weapon norm approval) on request!

IP66/68 watertight
up to 2 bar / 2h



250V~

250V~

50/60Hz
blue





50/60Hz
bronzegreen









Amp.
Poles
pack.
unit







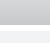

Abbreviations/Types









Cat.No.

Cat.No.

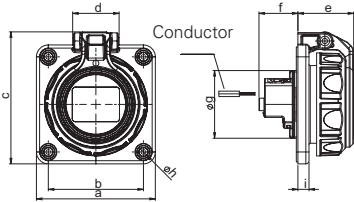
			Austrian/German System French/Belgian System					i
16	3	10	2-earthing systems		20051-b	20051-u		

16	3	10	Austrian/German System without shutter		20251-b	20251-u		
16	3	10	with shutter		20251-bc	20251-uc		
16	3	10	French/Belgian System without shutter		20241-b	20241-u		
16	3	10	with shutter		20241-bc	20241-uc		

16	3	10	Austrian/German System rear connection		20351-9b	20351-9u		
16	3	10	rear connection, with shutter		20351-9bc	20351-9uc		
16	3	10	French/Belgian System rear connection		20341-9b	20341-9u		
16	3	10	rear connection, with shutter		20341-9bc	20341-9uc		

16	3	10	Austrian/German System rear connection		20351-8b	20351-8u		
16	3	10	rear connection, with shutter		20351-8bc	20351-8uc		
16	3	10	French/Belgian System rear connection		20341-8b	20341-8u		
16	3	10	rear connection, with shutter		20341-8bc	20341-8uc		

watertight flanged sockets IP66/68

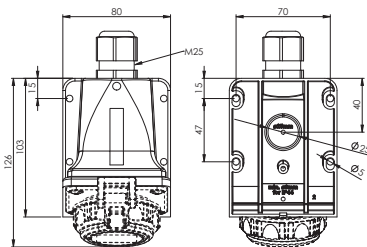


Flanged socket 75x75mm with hinged lid IP66/68

	16 Amp
Poles	2P + E
a [mm]	75
b [mm]	60
c [mm]	84
d [mm]	30
e [mm]	36
f [mm]	25
g [mm]	43
h [mm]	5,5
i [mm]	7
Wire flexible [mm ²]	1 - 2x2,5
Wire solid [mm ²]	1 - 2x2,5
Contact screws [Ncm]	80
Weight [g]	105

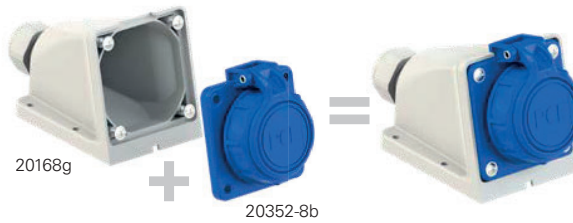
- with screw terminals
- housing material: PC/ABS
- contacts: nickel-plated contacts
- rear connection
- 4-point fastening

IP66/68 watertight
up to 2 bar / 2h

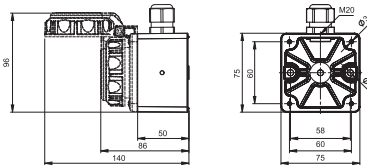


Wall housing for flanged socket 75x75mm IP66/68

Example:

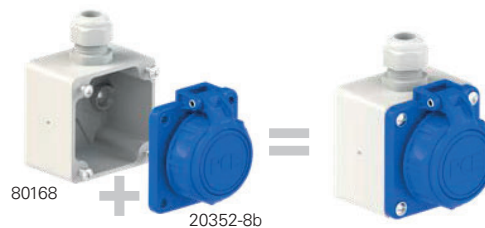


- for flange size 75x75mm
- material: PA6
- 4-point fixation
- incl. mounting screws
- incl. cable gland M25



Surface housing for flanged socket 75x75mm IP66/68

Example:



- for flange size 75x75mm
- material: PA6
- 2-point fixation separated from connection area
- incl. mounting screws
- incl. cable gland M20



Fig.1

Opening and closing:

When opening the hinged lid it latches into a defined position which prevents the lid when closing in a half position (Fig.1) on the housing.

The open and closed position is visible by the position of the silver label to make sure, that the socket is closed all the way to be watertight.



Labelling field horizontal:
cover closed
watertight



Labelling field NOT horizontal:
cover **not closed**
correctly (no seal)

250V~	250V~
50/60Hz blue	50/60Hz bronzegreen
Cat.No.	Cat.No.

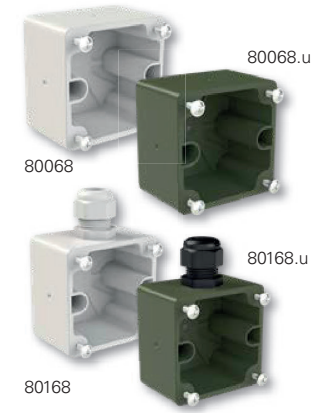
Amp.	Poles	pack. unit	Abbreviations/Types	Cat.No.	Cat.No.
16	3	10	Austrian/German System rear connection	20352-8b	20352-8u
				20352-8bc	20352-8uc
16	3	10	rear connection, with shutter		
16	3	10	French/Belgian System rear connection	20342-8b	20342-8u
				20342-8bc	20342-8uc
16	3	10	rear connection, with shutter		



Amp.	Poles	pack. unit	Abbreviations/Types	Cat.No.	Cat.No.
		10	grey wall housing (empty)	20168g	20168.u



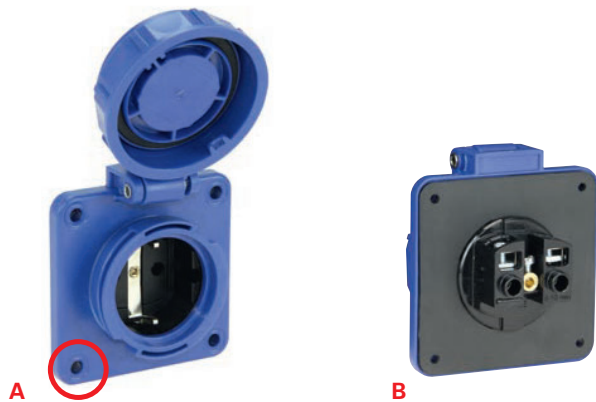
Amp.	Poles	pack. unit	Abbreviations/Types	Cat.No.	Cat.No.
		10	surface housing, no opening (blind)	80068	80068.u
		10	surface housing with 1x cable gland M20	80168	80168.u



■ Screw head seal:

Plastic bed „A“ acts as an additional screw head seal to prevent water entering through the screw head.

Flange gasket (seal) „B“ additionally prevents water entering through the threaded shaft of the screw.





The new **TAURUS²** impresses with its modern design and extraordinary versatility. The functional design guarantees simple and fast assembly and unbeatable user-friendliness.



100%
MADE IN AUSTRIA

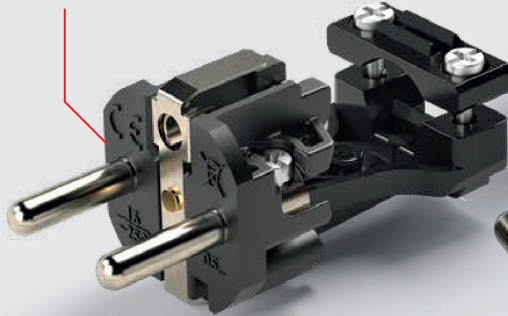
- for severe conditions
- 16A 250V~
- single and dual earthing system

Torques:	
contact screws:	80Ncm
strain relief/housing screw:	110Ncm

- ✓ easy disassembly of housing
- ✓ large connection area
- ✓ simple mounting of the contact carriers
- ✓ internal strain relief
- ✓ easy to use cable clamp elements (open screws)
- ✓ all contact screws can be adjusted from a single direction

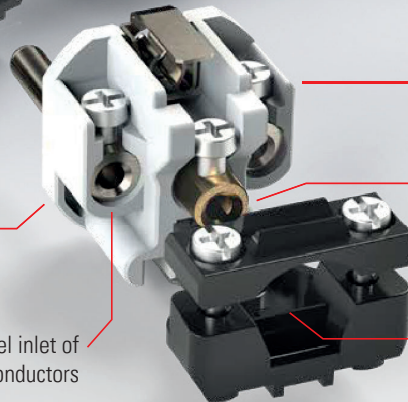
QUALITY IN EVERY DETAIL

Solid rubber version
contact carrier rubber (TPE)



Rubber version
contact carrier polyamide (PA6)

funnel inlet of
conductors



open +/- contact
screws (PH2)

PE terminal leading
(no need to shorten
L and N conductor)

open strain relief
(PA6)

2x8
COLOR VARIATIONS

Standard version
housing black / ring red



special colors **ring**



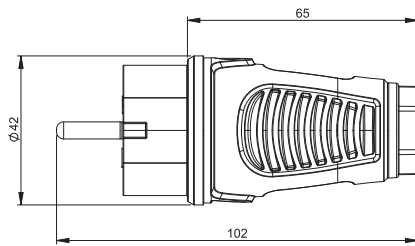
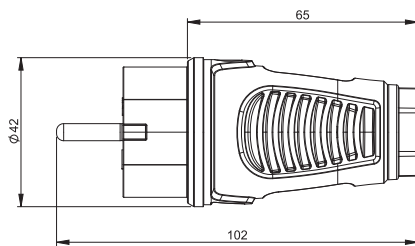
special colors **housing**



Plug IP54

Safety plug Series TAURUS²

- rubber version (housing TPE, contact carriers PA6) or
- solid rubber version (housing TPE, contact carriers TPE)
- Austrian/German system or dual earthing system
- color (housing/ring): black/red (standard)
- protection class: **IP54** splashproof



Austrian/German system



Version	Rubber	Solid rubber
contact carriers	Polyamide (PA6)	Rubber (TPE)
Austrian/German	0511-sr	0512-sr



pack. unit = 30 pcs. (minimum order quantity)



Dual earthing system



Version	Rubber	Solid rubber
contact carriers	Polyamide (PA6)	Rubber (TPE)
dual earthing system	0521-sr	0522-sr



pack. unit = 30 pcs. (minimum order quantity)



Special colors ring (MOQ 200 pcs.)	black	orange	yellow	green	blue	white	dark gray
Austrian/German rubber	0511-ss	0511-so	0511-se	0511-shu	0511-sb	0511-sw	0511-sdg
Austrian/German solid rubber	0512-ss	0512-so	0512-se	0512-shu	0512-sb	0512-sw	0512-sdg
dual earthing system rubber	0521-ss	0521-so	0521-se	0521-shu	0521-sb	0521-sw	0521-sdg
dual earthing system solid rubber	0522-ss	0522-so	0522-se	0522-shu	0522-sb	0522-sw	0522-sdg



Special colors housing (MOQ 500 pcs.)	red	orange	yellow	green	blue	light gray	anthracite
Austrian/German rubber	0511-rs	0511-os	0511-es	0511-us	0511-bs	0511-gs	0511-as
Austrian/German solid rubber	0512-rs	0512-os	0512-es	0512-us	0512-bs	0512-gs	0512-as
dual earthing system rubber	0521-rs	0521-os	0521-es	0521-us	0521-bs	0521-gs	0521-as
dual earthing system solid rubber	0522-rs	0522-os	0522-es	0522-us	0522-bs	0522-gs	0522-as

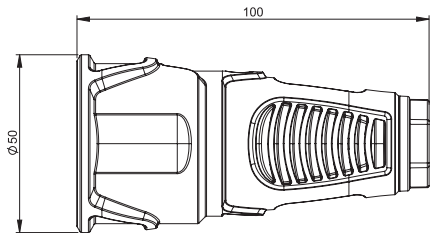


2520-sr

Connector IP20

Safety connector Series TAURUS²

- rubber version (housing TPE, contact carriers PA6) or
- solid rubber version (housing TPE, contact carriers TPE)
- Austrian/German or French/Belgian system
- with or without shutter
- color (housing/ring): black/red (standard)
- Protection class: **IP20**



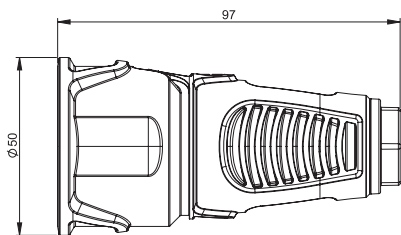
Austrian/German system



Version	Rubber	Solid rubber
contact carriers	Polyamide (PA6)	Rubber (TPE)
Austrian/German	2510-sr	2520-sr
Austrian/German with shutter SAFETY+	2510-src	–



pack. unit = 20 pcs. (minimum order quantity)



French/Belgian system



Version	Rubber	Solid rubber
contact carriers	Polyamide (PA6)	Rubber (TPE)
French/Belgian	2410-sr	–
French/Belgian with shutter NF	2410-src	–

pack. unit = 20 pcs. (minimum order quantity)



Special colors ring (MOQ 200 pcs.)	black	orange	yellow	green	blue	white	dark gray
Austrian/German rubber	2510-ss	2510-so	2510-se	2510-shu	2510-sb	2510-sw	2510-sdg
Austrian/German rubber with shutter	2510-ssc	2510-soc	2510-sec	2510-shuc	2510-sbc	2510-swc	2510-sdgc
Austrian/German solid rubber	2520-ss	2520-so	2520-se	2520-shu	2520-sb	2520-sw	2520-sdg
French/Belgian rubber	2410-ss	2410-so	2410-se	2410-shu	2410-sb	2410-sw	2410-sdg
French/Belgian rubber with shutter	2410-ssc	2410-soc	2410-sec	2410-shuc	2410-sbc	2410-swc	2410-sdgc



Special colors housing (MOQ 500 pcs.)	red	orange	yellow	green	blue	light gray	anthracite
Austrian/German rubber	2510-rs	2510-os	2510-es	2510-us	2510-bs	2510-gs	2510-as
Austrian/German rubber with shutter	2510-rsc	2510-osc	2510-esc	2510-usc	2510-bsc	2510-gsc	2510-asc
Austrian/German solid rubber	2520-rs	2520-os	2520-es	2520-us	2520-bs	2520-gs	2520-as
French/Belgian rubber	2410-rs	2410-os	2410-es	2410-us	2410-bs	2410-gs	2410-as
French/Belgian rubber with shutter	2410-rsc	2410-osc	2410-esc	2410-usc	2410-bsc	2410-gsc	2410-asc

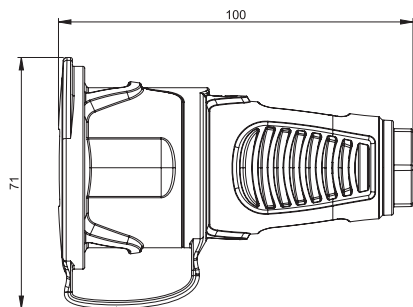
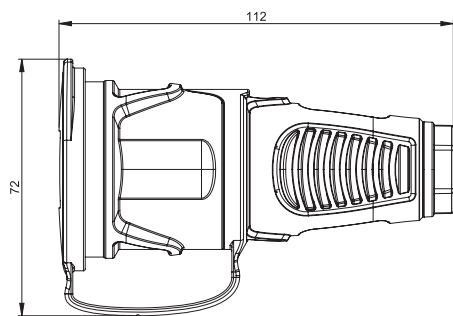




Connector IP54 with cap

Safety connector Series TAURUS²

- rubber version (housing TPE, contact carriers PA6) or
- solid rubber version (housing TPE, contact carriers TPE)
- Austrian/German or French/Belgian system
- with or without shutter
- with cap and band
- color (housing/ring): black/red (standard)
- Protection class: **IP54** splashproof



Austrian/German system



Version	Rubber	Solid rubber
contact carriers	Polyamide (PA6)	Rubber (TPE)
Austrian/German	2511-sr	2521-sr
Austrian/German with shutter SAFETY	2511-src	–



pack. unit = 20 pcs. (minimum order quantity)



French/Belgian system



Version	Rubber	Solid rubber
contact carriers	Polyamide (PA6)	Rubber (TPE)
French/Belgian	2411-sr	–
French/Belgian with shutter	NF 2411-src	–



pack. unit = 20 pcs. (minimum order quantity)



Special colors ring (MOQ 200 pcs.)	black	orange	yellow	green	blue	white	dark gray
Austrian/German rubber	2511-ss	2511-so	2511-se	2511-shu	2511-sb	2511-sw	2511-sdg
Austrian/German rubber with shutter	2511-ssc	2511-soc	2511-sec	2511-shuc	2511-sbc	2511-swc	2511-sdgc
Austrian/German solid rubber	2521-ss	2521-so	2521-se	2521-shu	2521-sb	2521-sw	2521-sdg
French/Belgian rubber	2411-ss	2411-so	2411-se	2411-shu	2411-sb	2411-sw	2411-sdg
French/Belgian rubber with shutter	2411-ssc	2411-soc	2411-sec	2411-shuc	2411-sbc	2411-swc	2411-sdgc



Special colors housing (MOQ 500 pcs.)	red	orange	yellow	green	blue	light gray	anthracite
Austrian/German rubber	2511-rs	2511-os	2511-es	2511-us	2511-bs	2511-gs	2511-as
Austrian/German rubber with shutter	2511-rsc	2511-osc	2511-esc	2511-usc	2511-bsc	2511-gsc	2511-asc
Austrian/German solid rubber	2521-rs	2521-os	2521-es	2521-us	2521-bs	2521-gs	2521-as
French/Belgian rubber	2411-rs	2411-os	2411-es	2411-us	2411-bs	2411-gs	2411-as
French/Belgian rubber with shutter	2411-rsc	2411-osc	2411-esc	2411-usc	2411-bsc	2411-gsc	2411-asc

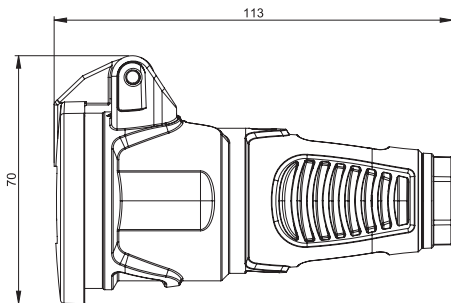
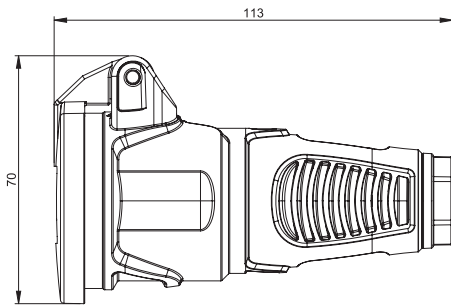


2522-sr

Connector IP54 with hinged lid

Safety connector Series TAURUS2

- rubber version (housing TPE, contact carriers PA6) or
- solid rubber version (housing TPE, contact carriers TPE)
- Austrian/German or French/Belgian system
- with or without shutter
- with self closing hinged lid
- color (housing/ring): black/red (standard)
- Protection class: **IP54** splashproof



Austrian/German system



Version	Rubber	Solid rubber
contact carriers	Polyamide (PA6)	Rubber (TPE)
Austrian/German	2512-sr	2522-sr
Austrian/German with shutter SAFETY+	2512-src	–



pack. unit = 20 pcs. (minimum order quantity)



French/Belgian system



Version	Rubber	Solid rubber
contact carriers	Polyamide (PA6)	Rubber (TPE)
French/Belgian	2412-srw	–
French/Belgian with shutter	2412-srcw	–



pack. unit = 20 pcs. (minimum order quantity)



Special colors ring (MOQ 200 pcs.)	black	orange	yellow	green	blue	white	dark gray
Austrian/German rubber	2512-ss	2512-so	2512-se	2512-shu	2512-sb	2512-sw	2512-sdg
Austrian/German rubber with shutter	2512-ssc	2512-soc	2512-sec	2512-shuc	2512-sbc	2512-swc	2512-sdgc
Austrian/German solid rubber	2522-ss	2522-so	2522-se	2522-shu	2522-sb	2522-sw	2522-sdg
French/Belgian rubber	2412-ssw	2412-sow	2412-sew	2412-shuw	2412-sbw	2412-sww	2412-sdgw
French/Belgian rubber with shutter	2412-sscw	2412-socw	2412-secw	2412-shucw	2412-sbcw	2412-swcw	2412-sdgcw

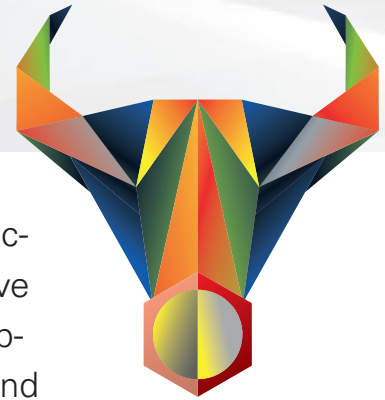


Special colors housing (MOQ 500 pcs.)	red	orange	yellow	green	blue	light gray	anthracite
Austrian/German rubber	2512-rs	2512-os	2512-es	2512-us	2512-bs	2512-gs	2512-as
Austrian/German rubber with shutter	2512-rsc	2512-osc	2512-esc	2512-usc	2512-bsc	2512-gsc	2512-asc
Austrian/German solid rubber	2522-rs	2522-os	2522-es	2522-us	2522-bs	2522-gs	2522-as
French/Belgian rubber	2412-rsw	2412-ows	2412-esw	2412-usw	2412-bsw	2412-gsw	2412-asw
French/Belgian rubber with shutter	2412-rscw	2412-oscw	2412-escw	2412-uscw	2412-bscw	2412-gscw	2412-ascw



TOPTAURUS²

Der Schutzkontaktstecker



The new series **TOPTAURUS²** safety plugs and connectors is now even easier to assemble thanks to the innovative quick locking system: the completely new design in the rubberized housing allows for the shortest connection times and outstanding haptics - optionally with LED voltage indicator (connector).



Plug IP54

Connector IP20

Connector IP54
with cap

Connector IP54
with hinged lid



100%
MADE IN AUSTRIA

- for severe conditions
- 16A 250V~
- dual earthing system

Torques:

contact screws:	80Ncm
housing (strain relief):	400Ncm

STRONG-QUICK-UNIQUE

- ✓ minimum assembly time due to screwless quick locking system for the housing cover and strain relief
- ✓ rubberized surface for optimum feel and perfect grip
- ✓ easy mounting and dismounting of the contact carrier
- ✓ open contact screws - all operable from one direction
- ✓ connector: LED operating voltage indicator (optional)



6 COLORS AVAILABLE



Standard
black/red

Midnight
black/black

Special colors
on request

LED operating voltage indicator

for visual indication if voltage is present.
(suitable for repeating tests)



QUICK & EASY ASSEMBLY

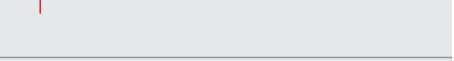
1 Push in direction of the arrow to unlock contact carrier



2 Pull out contact carrier



3 Insert and connect cable



4 Tighten housing cover
contact carrier is automatically locked and strain relief is tightened



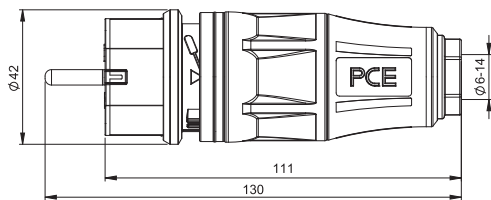
READY!



Plug IP54

Safety plug series TOPTAURUS²

- material: PA6, 2-component rubberized
- system: dual earthing system
- screwless quick lock system for housing cover and strain relief
- color: black/red
- protection class: **IP54** dust- and splashproof



05721-sr



version	dual earthing system
plug IP54	05721-sr

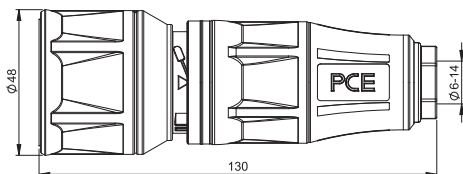


pack.unit = 20 pcs.

Connector IP20

Safety connector series TOPTAURUS²

- material: PA6, 2-component rubberized
- system: Austrian/German
- screwless quick lock system for housing cover and strain relief
- color: black/red
- optional: LED voltage indicator light
- protection class: **IP20**



25710-sr



version		Austr./German
connector IP20		25710-sr
connector IP20 with shutter		25710-src
connector IP20 with LED voltage indicator	SAFETY+ LED	25730-sr
connector IP20 with shutter and with LED voltage indicator	LED SAFETY+	25730-src

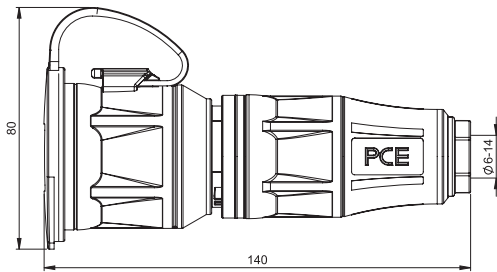


pack.unit = 10 pcs.

Connector IP54 with cap

Safety connector series TOPTAURUS2

- material: PA6, 2-component rubberized
- system: Austrian/German or French/Belgian
- cap with band
- screwless quick lock system for housing cover and strain relief
- color: black/red
- optional: LED voltage indicator light
- protection class: **IP54** dust- and splashproof



25711-sr



version	Austr./German	French/Belgian
connector IP54 with cap	25711-sr	24711-sr
with shutter SAFETY+	25711-src	24711-src
with LED voltage indicator	25731-sr	24731-sr
with shutter and with LED voltage indicator	25731-src	24731-src

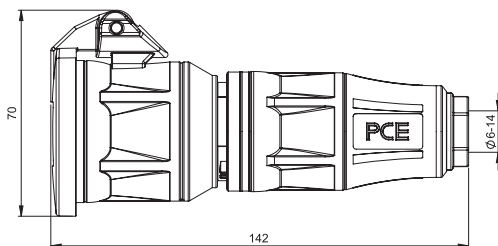


pack.unit = 10 pcs.

Connector IP54 with hinged lid

Safety connector series TOPTAURUS2

- material: PA6, 2-component rubberized
- system: Austrian/German or French/Belgian
- cover with hinged lid
- screwless quick lock system for housing cover and strain relief
- color: black/red
- optional: LED voltage indicator light
- protection class: **IP54** dust- and splashproof



25712-sr



Version	Austr./German	French/Belgian
connector IP54 with hinged lid	25712-sr	24712-sr
with shutter SAFETY+	25712-src	24712-src
with LED voltage indicator	25732-sr	24732-sr
with shutter and with LED voltage indicator	25732-src	24732-src



pack.unit = 10 pcs.



3-way connector

- IP44
-  for severe conditions
- 16A 250V~
- rubber and solid rubber

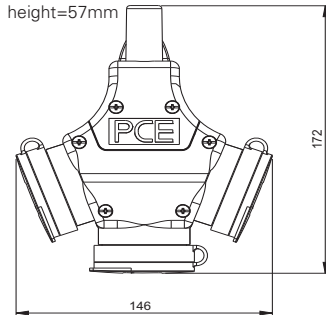


cap with band

separate assembly area
connection on terminals (also
for 5-pole connector terminal)

- contact carriers integrated in housing
- own contact elements
- open cable clamp
- ready wired on main terminal (PH1)
- cap with band

3-way connector rubber with cap* IP44



- with cap
- Insert: polyamide
- Ready pre-wired on main terminal

IP44 splashproof



contact carriers:	acc. Austrian/German system	acc. French/Belgian System
Polyamide	25311-s	24311-s
Polyamide with shutter SAFETY+	25311-sc	24311-sc

pack.unit: 5 pcs.



* 3-way connectors with hinged lid see page 199

3-way connector rubber with cap* and 5-pole connector IP44



- 5-pole connector terminal
- With cap
- Insert: polyamide
- Ready pre-wired on main terminal

IP44 splashproof



contact carriers:	acc. Austrian/German system	acc. French/Belgian System
Polyamide	25311-s5	24311-s5
Polyamide with shutter		24311-sc5

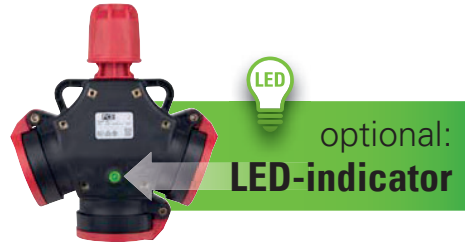
pack.unit: 5 pcs.



* 3-way connectors with hinged lid see page 199



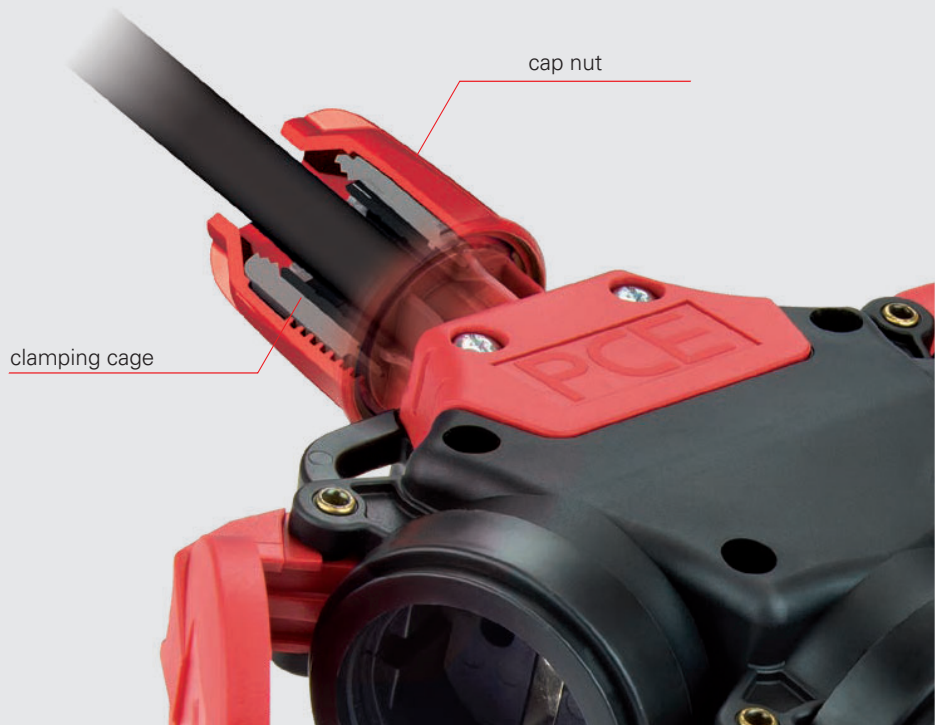
3-WAY CONNECTOR



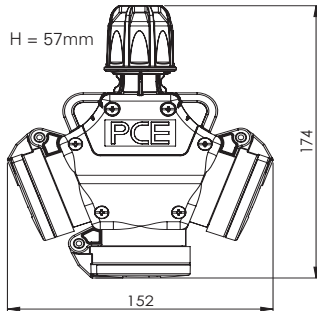
- hinged lid (self closing)
- large connection area
- 3 or 5 pole terminal
- suspension hook
- LED-indicator optional

CABLE GLAND

- externally placed
- easy handling
- simple assembly
- for cable diameters from:
6–13mm (plug & connector)
6–19mm (3-way connector)

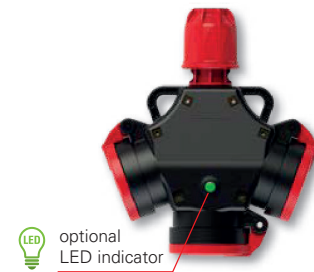


3-way connector solid rubber with hinged lid IP44



- With hinged lid
- External centric cable gland
- Insert: rubber
- Ready wired on main terminal

IP44 splashproof



optional LED indicator



contact carriers:	
Austrian/German	253622-s
Austrian/German (with LED indicator)	253642-s

pack.unit: 5 pcs.

other versions (e.g. shutter) on request!

3-way connector solid rubber with hinged lid and 5-pole terminal IP44



- 5-pole terminal
- With hinged lid
- External centric cable gland
- Insert: rubber
- Ready wired on main terminal

IP44 splashproof

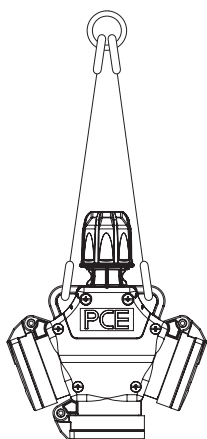


contact carriers:	
Austrian/German	253622-s5

pack.unit: 5 pcs.

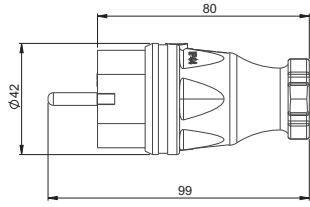
■ 3-way connectors are also perfect for hanging use!

• **Suspension kit** for 3-way connector (L=300mm) **2563-1**



Safety plugs

Plug French/Belgian system IP44



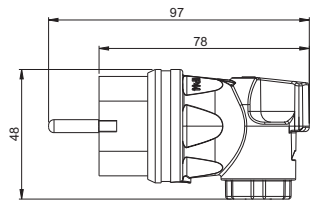
IP44 splashproof



Version:	Rubber	Solid rubber
Contact carriers	polyamide (PA6)	rubber (TPE)
french/belgian	0531-s	0532-s

pack.unit: 30 pcs.

Angled plug (rubber / solid rubber) IP44



IP44 splashproof

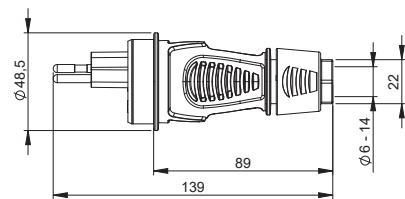


Insert:	acc. Austrian/German system	dual earthing system	acc. French/Belgian System
Polyamide	05811-s	05821-s	05831-s
Rubber	05812-s	05822-s	05832-s

pack.unit: 20 pcs.

Safety plug T13 and T23 Swiss system IP55

- screw contact
- material; PA6 / TPE
- external cable gland



IP55 dust- and splashproof



version	T13	T23
system	Swiss system 10A 3p IP55	Swiss system 16A 3p IP55
Cat.No.	0313-ss	0323-ss

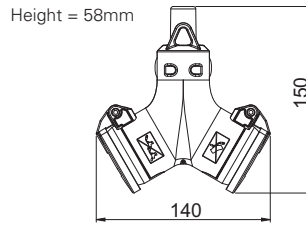
pack unit: 30 pcs.

PA/PP safety plugs and sockets

2-way connector with hinged lid IP44

- With hinged lid
- Insert: polyamide

IP44 splashproof



Insert:	acc. Austrian/German system	acc. French/Belgian System
Polyamide	25212-r	24212-r
Polyamide with shutter SAFETY+	25212-rc	24212-rc

pack.unit: 10 pcs.

Safety plugs and connectors

Polypropylene

Plug

- Polypropylene

IP20

Color	pack. unit	acc. Austrian/German system		dual earthing system
		cable entry central	cable entry side	cable entry central
white	50	02958	05018	08266
brown	50	02961	05021	08282
black	50	02974	05034	08295
grey	50	02980	05040	

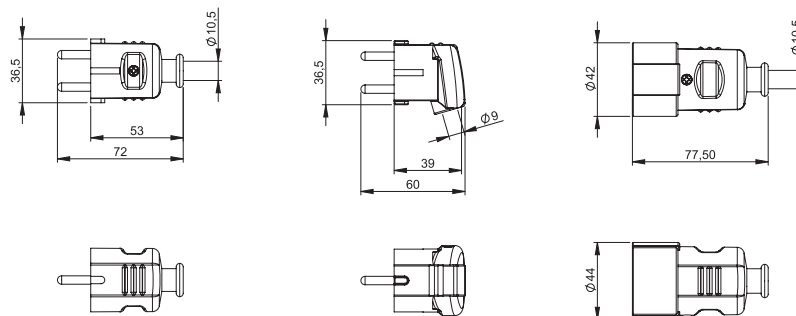


Connector

- Polypropylene

IP20

Color	pack. unit	acc. French/Belgian system	
white	25	05148	08224
brown	25	05164	
black	25	05177	08253
grey	25	05180	



Plug British system 13A

Plug

- Polyamide
- With integrated 13A fuse
- Cable entry: side

IP32

Color	pack. unit.	acc. british system
		cable entry side
black	10	00200

